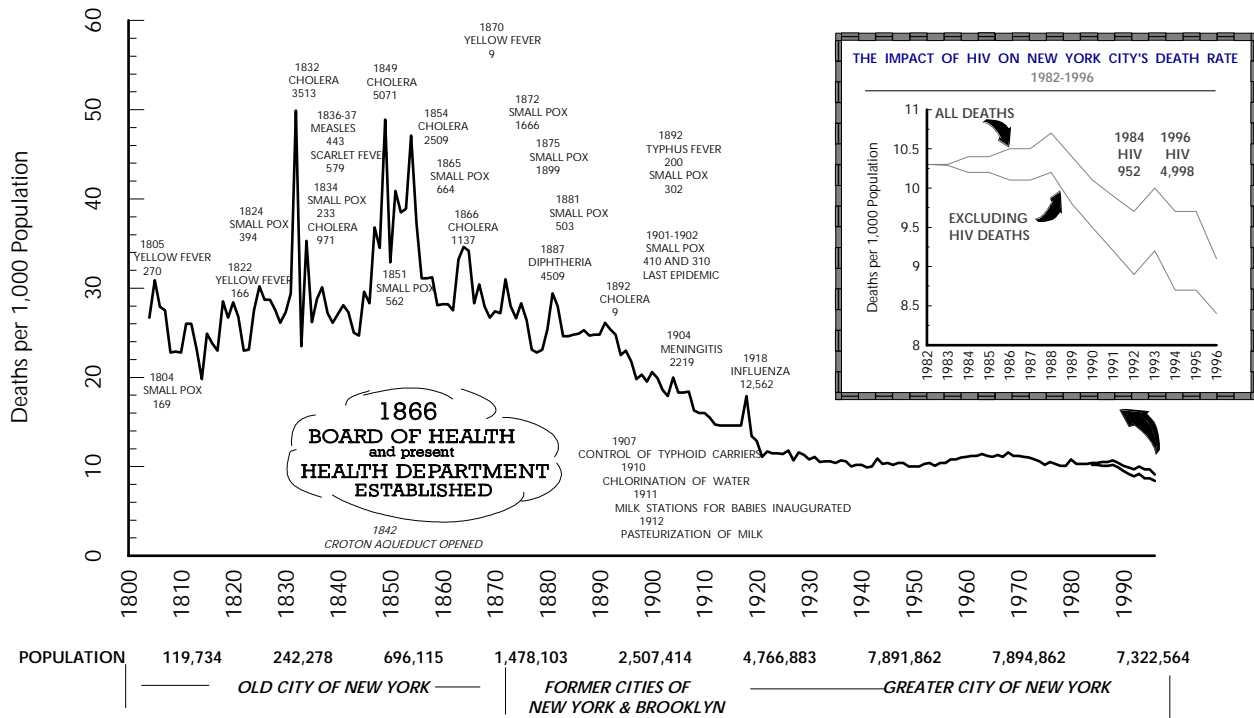


# SUMMARY OF VITAL STATISTICS 1996

## THE CITY OF NEW YORK

### The Conquest of Pestilence in New York City

...As Shown by the Death Rate as Recorded in the Official Records of the Department of Health.



## CONTENTS

	PAGE
Table 1	3
Table 2a	4
Table 2b	4
Table 3	5
Table 4	6,7
Table 5	8
Table 6	9
Table 7	9
Table 7A	9
Table 8	10
Table 9	10
Table 10	10
Table 11	11
Table 12	11
Table 13	12
Table 14	12
Table 15	13
Table 16	13
Table 17	16,17
Table 18	19
Table 19	19
Table 20	20
Table 21	20
Table 22	22
Table 23	23
Table 24	24
Table 25	24
Table 26	25
Table 27	25
Table 28	26
Table 29	26
Table 30a	27
Table 30b	27
Table 31	27
Table 32	28
Table 33	29
Table 34	29
Figure 1	14
Figure 2	14
Figure 3	14
Figure 4	15
Figure 5	15
Figure 6	15
Figure 7	18
Figure 8	18
Figure 9	21
Figure 10a	21
Figure 10b	21
Figure 11	31
Technical Notes	30
Rates and Ratios Defined	31
Highlights	Back cover

Table 1.

## Population, Births, Marriages, Deaths and Infant Mortality, New York City, 1898-1996

Year	Population April 1	Live Births		Marriages		Deaths		Infant Mortality	
		Total Reported	Rate per 1,000 Population	Total Reported	Rate per 1,000 Population	Total Reported	Rate per 1,000 Population	Deaths under one year	Rate per 1,000 live births
1898-1900	3,358,000	119,000	35.4	30,535	9.1	67,503	20.1	16,264	136.7
1901-1905	3,786,000	129,000	34.1	37,988	10.0	71,689	18.9	15,611	121.0
1906-1910	4,473,000	144,000	32.2	44,966	10.1	75,865	17.0	16,609	115.3
1911-1915	5,049,000	140,581	27.8	51,157	10.1	74,666	14.8	14,060	100.0
1916-1920	5,492,000	136,101	24.8	59,081	10.8	80,435	14.6	12,004	88.2
1921-1925	6,175,000	130,462	21.1	62,710	10.2	69,303	11.2	8,985	68.9
1926-1930	6,703,000	125,590	18.7	62,278	9.3	75,395	11.2	7,662	61.0
1931-1935	7,101,000	106,179	15.0	63,273	8.9	75,561	10.6	5,521	52.0
1936-1940	7,363,000	102,418	13.9	69,184	9.4	76,065	10.3	4,079	39.8
1941-1945	7,597,000	126,495	16.7	76,086	10.0	78,382	10.3	3,525	27.9
1946-1950	7,815,000	158,926	20.3	90,914	11.6	79,708	10.2	4,139	26.0
1951-1955	7,867,000	163,526	20.8	71,689	9.1	80,583	10.2	3,986	24.4
1956	7,831,000	165,553	21.1	70,291	9.0	81,118	10.4	4,052	24.5
1957	7,818,000	166,977	21.4	69,498	8.9	84,141	10.8	4,176	25.0
1958	7,806,000	167,775	21.5	67,594	8.7	84,586	10.8	4,435	26.4
1959	7,794,000	168,138	21.6	66,887	8.6	85,352	11.0	4,458	26.5
1960	7,781,984	166,300	21.4	67,133	8.6	86,252	11.1	4,328	26.0
1961	7,793,000	168,383	21.6	66,258	8.5	86,855	11.1	4,307	25.6
1962	7,805,000	165,244	21.2	65,512	8.4	87,089	11.2	4,510	27.3
1963	7,816,000	167,848	21.5	67,886	8.7	88,621	11.3	4,334	25.8
1964	7,828,000	165,695	21.2	70,053	8.9	88,026	11.2	4,438	26.8
1965	7,839,000	158,815	20.3	71,880	9.2	87,395	11.1	4,076	25.7
1966	7,850,000	153,335	19.5	66,689	8.5	88,418	11.3	3,819	24.9
1967	7,862,000	145,802	18.5	68,876	8.8	87,610	11.1	3,489	23.9
1968	7,873,000	141,920	18.0	73,307	9.3	91,169	11.6	3,282	23.1
1969	7,885,000	146,221	18.5	75,220	9.5	88,535	11.2	3,563	24.4
1970	7,894,862	149,192	18.9	74,174	9.4	88,161	11.2	3,230	21.6
1971	7,832,000	131,920	16.8	73,810	9.4	86,724	11.1	2,751	20.9
1972	7,731,000	117,088	15.1	73,253	9.5	85,363	11.0	2,321	19.8
1973	7,648,000	110,639	14.5	70,104	9.2	82,319	10.8	2,206	19.9
1974	7,566,000	110,642	14.6	61,925	8.2	79,846	10.6	2,175	19.7
1975	7,484,000	109,418	14.6	59,591	8.0	76,312	10.2	2,110	19.3
1976	7,401,000	109,995	14.9	55,829	7.5	77,538	10.5	2,092	19.0
1977	7,318,000	110,486	15.1	52,804	7.2	75,011	10.3	1,971	17.8
1978	7,236,000	106,720	14.7	54,247	7.5	73,081	10.1	1,827	17.1
1979	7,154,000	106,021	14.8	58,532	8.2	72,079	10.1	1,767	16.7
1980	7,071,639	107,066	15.1	58,637	8.3	76,625	10.8	1,719	16.1
1981	7,097,000	108,547	15.3	61,775	8.7	73,329	10.3	1,678	15.5
1982	7,122,000	111,487	15.7	66,619	9.4	73,083	10.3	1,706	15.3
1983	7,147,000	112,353	15.7	68,164	9.5	73,544	10.3	1,603	14.3
1984	7,172,000	113,332	15.8	76,336	10.6	74,278	10.4	1,540	13.6
1985	7,197,000	118,542	16.5	77,897	10.8	74,852	10.4	1,591	13.4
1986	7,222,000	122,108	16.9	82,199	11.4	75,702	10.5	1,566	12.8
1987	7,247,000	127,386	17.6	76,194	10.5	76,448	10.5	1,673	13.1
1988	7,272,000	132,226	18.2	74,137	10.2	77,817	10.7	1,770	13.4
1989	7,297,000	137,673	18.9	69,758	9.6	75,957	10.4	1,827	13.3
1990	7,322,564	139,630	19.1	71,301	9.7	73,875	10.1	1,620	11.6
1991	7,322,564	138,148	18.9	69,314	9.5	72,421	9.9	1,575	11.4
1992	7,322,564	136,002	18.6	71,947	9.8	71,001	9.7	1,390	10.2
1993	7,322,564	133,583	18.2	72,490	9.9	73,408	10.0	1,366	10.2
1994	7,322,564	133,662	18.3	70,438	9.6	71,038	9.7	1,207	9.0
1995	7,322,564	131,009	17.9	71,507	9.8	70,769	9.7	1,155	8.8
1996	7,322,564	126,901	17.3	79,361	10.8	66,784	9.1	992	7.8

Note: Figures for single years prior to 1956 appear in the annual summaries for 1965 and earlier. Figures for 1898-1913 births are estimated.  
See Technical Notes.

Table 2a.

**Population by Age, Race, and Sex, and by Hispanic Ancestry  
New York City, 1990**

Age In Years	POPULATION IN 1990											
	Race									Hispanic Ancestry*		
	All Races			White		Black		Other & Unknown		Total	Male	Female
	Total	Male	Female	Male	Female	Male	Female	Male	Female			
All Ages	7,322,564	3,437,667	3,884,897	2,117,645	2,356,194	1,038,666	1,253,141	281,356	275,562	1,783,478	850,184	933,294
Under 5	531,430	271,149	260,281	144,384	137,618	105,086	102,594	21,679	20,069	172,912	87,867	85,045
5-9	455,829	232,471	223,358	122,528	116,567	92,243	90,177	17,700	16,614	148,750	75,649	73,101
10-14	447,301	226,297	221,004	118,176	112,975	90,300	91,149	17,821	16,880	144,309	73,312	70,997
15-19	478,207	240,913	237,294	128,146	123,558	92,350	94,101	20,417	19,635	147,890	75,768	72,122
20-24	587,854	285,778	302,076	168,245	172,788	93,430	105,095	24,103	24,193	168,970	84,645	84,325
25-29	705,351	343,352	361,999	211,068	212,727	100,104	118,000	32,180	31,272	181,247	88,760	92,487
30-34	669,944	325,318	344,626	201,281	201,376	90,692	112,089	33,345	31,161	164,062	77,960	86,102
35-39	589,631	283,579	306,052	176,075	179,308	79,508	101,087	27,996	25,657	140,274	65,296	74,978
40-44	513,936	241,148	272,788	153,021	163,364	65,863	87,225	22,264	22,199	117,462	53,590	63,872
45-49	410,951	189,561	221,390	119,100	132,191	54,359	73,675	16,102	15,524	93,685	42,521	51,164
50-54	350,874	161,197	189,677	102,595	115,107	45,063	61,538	13,539	13,032	78,172	35,137	43,035
55-59	320,527	145,060	175,467	97,974	112,944	36,533	51,633	10,553	10,890	65,590	28,640	36,950
60-64	323,098	141,494	181,604	101,306	123,759	31,936	48,341	8,252	9,504	53,960	22,628	31,332
65-69	294,755	122,953	171,802	90,774	122,642	25,714	41,875	6,465	7,285	39,783	15,570	24,213
70-74	230,094	89,767	140,327	69,370	105,274	16,271	30,046	4,126	5,007	27,069	9,840	17,229
75-79	189,695	68,509	121,186	55,614	95,961	10,332	95,961	2,563	3,523	19,968	6,821	13,147
80-84	124,744	41,150	83,594	34,463	68,939	5,306	12,810	1,381	1,845	11,315	3,677	7,638
85 & Over	98,343	27,971	70,372	23,525	59,096	3,576	10,004	870	1,272	8,060	2,503	5,557

Note: These population figures replace those published in the 1990 Vital Statistics Summary, and are based on the Census Bureau's modification of its data correcting the underreporting of race by persons of Hispanic ancestry. The major effects are a reduction of 60% in the total for Other and Unknown race and increases of 17% and 9% in the totals for whites and blacks, respectively. There were minor changes in age and sex as well.

\*Persons of Hispanic ancestry may be of any race.

Table 2b.

**Deaths by Age, Race, and Sex, and by Hispanic Ancestry  
New York City, 1996**

Age In Years	DEATHS IN 1996											
	Race									Hispanic Ancestry*		
	All Races			White		Black		Other & Unknown		Total	Male	Female
	Total	Male	Female	Male	Female	Male	Female	Male	Female			
All Ages	66,784	33,417	33,367	22,773	23,619	8,835	8,461	1,809	1,287	8,707	4,988	3,719
Under 5	1,185	647	538	282	243	268	225	97	70	228	122	106
5-9	114	68	46	28	25	35	20	5	1	22	10	12
10-14	113	62	51	30	26	27	22	5	3	27	15	12
15-19	275	198	77	80	36	109	35	9	6	59	45	14
20-24	500	369	131	212	67	138	47	19	17	154	122	32
25-29	823	579	244	327	121	215	114	37	9	227	165	62
30-34	1,545	1,027	518	585	248	390	244	52	26	430	305	125
35-39	2,122	1,425	697	828	321	516	337	81	39	547	380	167
40-44	2,697	1,825	872	990	393	755	441	80	38	572	413	159
45-49	2,991	1,949	1,042	1,088	542	732	457	129	43	644	446	198
50-54	2,945	1,849	1,096	1,104	588	636	457	109	51	579	400	179
55-59	3,259	2,001	1,258	1,197	726	671	473	133	59	638	412	226
60-64	4,179	2,457	1,722	1,549	1,046	748	612	160	64	744	435	309
65-69	5,513	3,093	2,420	2,122	1,586	794	713	177	121	786	427	359
70-74	7,018	3,602	3,416	2,526	2,315	889	969	187	132	760	388	372
75-79	7,735	3,744	3,991	2,762	2,907	794	933	188	151	698	333	365
80-84	8,582	3,709	4,873	2,982	3,811	573	907	154	155	673	273	400
85 & Over	15,188	4,813	10,375	4,081	8,618	545	1,455	187	302	919	297	622

\*Persons of Hispanic ancestry may be of any race.

Table 3.

**Deaths by Cause and Borough of Residence  
New York City, 1996**

Cause (Codes from International Classification of Diseases, Ninth Revision, 1975)	Total	BOROUGH OF RESIDENCE						Non-Residents	Residence Unknown
		Manhattan	Bronx	Brooklyn	Queens	Richmond			
Total Deaths	66,784	12,795	10,988	19,746	15,651	3,333	3,840	431	
All Natural Causes	63,762	12,238	10,474	18,862	15,028	3,229	3,612	319	
1. Tuberculosis, all (010-018)	67	16	9	23	14	3	1	1	
Tuberculosis of respiratory system (010-012)	46	11	4	17	9	3	1	1	
Other tuberculosis (013-018)	21	5	5	6	5	-	-	-	
2. Septicemia (038)	320	73	70	82	64	15	14	2	
3. Acquired immunodeficiency syndrome (042)	4,946	1,430	1,200	1,423	573	109	153	58	
4. Other HIV infections (043-044)	52	12	11	16	9	1	3	-	
5. Viral hepatitis (070)	199	57	33	33	46	6	23	1	
6. Pneumocystosis (136.3)	23	4	6	8	3	-	2	-	
7. Other infective and parasitic diseases (Rest of 001-139)	123	29	30	27	27	5	4	1	
8. Malignant neoplasms, all (140-208)	14,591	2,868	2,036	4,105	3,368	801	1,377	36	
Lip, oral cavity and pharynx (140-149)	240	52	40	75	46	8	18	1	
Digestive organs and peritoneum (150-159)	4,057	800	576	1,156	1,010	196	307	12	
Stomach (151)	621	124	99	185	152	19	40	2	
Colon (153)	1,427	273	189	417	367	82	94	5	
Rectum (154)	209	37	29	58	57	9	18	1	
Liver, bile duct, gallbladder (155-156)	558	113	84	162	125	27	47	-	
Pancreas (157)	834	159	105	233	218	44	73	2	
Respiratory and intrathoracic organs (160-165)	3,596	726	525	971	817	230	315	12	
Trachea, bronchus and lung (162)	3,387	684	477	914	787	222	291	12	
Kaposi's sarcoma (173.9)	10	-	1	4	2	2	1	-	
Breast and genitourinary organs (174, 179-189)	3,787	728	536	1,136	869	208	304	6	
Breast, female (174)	1,504	289	230	445	355	73	109	3	
Cervix uteri (180)	168	25	34	54	31	11	12	1	
Ovary and other uterine adnexa (183)	393	74	43	115	89	24	48	-	
Prostate (185)	883	196	121	265	186	51	62	2	
Bladder and other urinary organs (188-189)	544	91	72	161	138	36	46	-	
Other and unspecified sites (Rest of 140-199)	1,470	298	175	382	334	83	195	3	
Lymphatic and hematopoietic tissues (200-208)	1,431	264	183	381	290	74	237	2	
Leukemia and aleukemia (204-208)	537	90	49	138	115	29	116	-	
9. Benign and unspecified neoplasms (210-239)	197	35	28	53	44	9	26	2	
10. Diabetes mellitus (250)	1,538	275	350	457	332	84	36	4	
11. Alcohol dependence syndrome (303)	345	88	42	125	58	9	9	14	
12. Drug dependence (304)	909	218	181	222	130	39	80	39	
Drug dependence and accidental drug poisoning	945	225	184	231	135	41	84	45	
13. Diseases of nervous system (320-389)	482	112	82	118	115	23	30	2	
Alzheimer's disease (331.0)	77	21	14	20	15	3	3	1	
14. Cardiovascular diseases, all (390-459)	30,995	5,152	4,707	9,580	8,383	1,674	1,392	107	
Cerebrovascular disease (430-438)	2,114	465	406	608	463	70	99	3	
Heart diseases (393-398, 402, 404-429)	27,571	4,398	4,040	8,632	7,659	1,522	1,220	100	
Chronic rheumatic heart disease (393-398)	74	17	11	26	6	3	11	-	
Ischemic heart disease (410-414)	22,214	3,181	2,981	7,139	6,516	1,353	996	48	
Other forms of heart disease (420-429)	3,238	762	616	938	644	108	142	28	
Hypertensive disease (401-404)	1,875	406	402	472	466	49	57	23	
Atherosclerosis (440)	231	39	45	65	50	22	10	-	
15. Pneumonia and influenza (480-487)	2,702	610	476	764	574	175	93	10	
16. Chronic obstructive pulmonary diseases, all (490-496)	1,643	356	294	508	333	109	37	6	
Bronchitis, emphysema, asthma (490-493)	507	116	101	149	91	34	15	1	
17. Ulcer of stomach and duodenum (531-533)	179	33	39	55	35	6	7	4	
18. Appendicitis (540-543)	12	2	2	2	4	1	1	-	
19. Intestinal obstruction and hernia (550-553, 560)	91	19	13	29	25	3	1	1	
20. Chronic liver disease and cirrhosis (571)	825	146	221	221	144	29	53	11	
21. Nephritis, nephrotic syndrome and nephrosis (580-589)	296	60	54	86	70	13	11	2	
22. Hyperplasia of prostate (600)	8	2	2	-	2	-	2	-	
23. Complications of pregnancy, childbirth and the puerperium (630-676)	22	3	8	4	4	-	3	-	
24. Congenital anomalies (740-759)	335	41	63	81	63	12	75	-	
25. Certain conditions originating in the perinatal period (760-779)	567	87	102	202	122	17	37	-	
26. Sudden infant death syndrome (798.0)	64	9	14	20	15	3	3	-	
27. Symptoms, signs and ill-defined conditions (Rest of 780-799)	210	48	18	58	63	9	9	5	
Pending final determination (799.9)	104	21	6	22	42	3	5	5	
28. All other diseases	2,021	453	383	560	408	74	130	13	
All External Causes	3,022	557	514	884	623	104	228	112	
Firearms	815	121	180	273	139	25	62	15	
29. Total accidents (E800-E949)	1,294	215	182	374	333	47	104	39	
Accidental drug poisoning	36	7	3	9	5	2	4	6	
Motor vehicle accidents (E810-E825)	438	57	52	137	114	20	48	10	
Home accidents	479	85	74	135	147	13	20	5	
30. Suicide and self inflicted injuries (E950-E959)	557	146	84	125	116	24	45	17	
31. Homicide and legal intervention (E960-E969, E970-E978, E990-E999)	1,018	160	226	350	159	28	69	26	
32. Injury undetermined whether accidentally or purposely inflicted (E980-E989)	153	36	22	35	15	5	10	30	

Note: Accidental drug poisoning codes include E850.0, E854.1, E855.2 and E858.8.  
Firearm codes include E922, E955.0-E955.4, E965.0-E965.4, E970, and E985.0-E985.4.

Table 4.

**Chief Causes of Death in Specified Age Groups by Sex  
New York City, 1996**

Males			Females	
Deaths	Percent		Deaths	Percent
<b>ALL AGES</b>				
12,278	36.7	Heart Diseases. . . . .	15,293	45.8
7,082	21.2	Malignant Neoplasms. . . . .	7,509	22.5
3,578	10.7	Acquired Immunodeficiency Syndrome (AIDS). . . . .	1,368	4.1
1,189	3.6	Pneumonia and Influenza. . . . .	1,513	4.5
874	2.6	Cerebrovascular Disease. . . . .	1,240	3.7
818	2.4	Chronic Obstructive Pulmonary Disease. . . . .	825	2.5
656	2.0	Diabetes Mellitus. . . . .	882	2.6
780	2.3	Accidents Except Drug Poisoning. . . . .	478	1.4
835	2.5	Homicide. . . . .	183	0.5
734	2.2	Drug Dependence and Accidental Drug Poisoning. . . . .	211	0.6
4,593	13.7	All Other Causes. . . . .	3,865	11.6
33,417	100.0	Total. . . . .	33,367	100.0
<b>UNDER 1 YEAR</b>				
113	20.9	Congenital Anomalies. . . . .	105	23.3
74	13.7	Other Conditions of the Perinatal Period. . . . .	55	12.2
49	9.1	Short Gestation and Low Birth Weight. . . . .	63	14.0
57	10.5	Respiratory Conditions of Newborn. . . . .	41	9.1
50	9.2	Respiratory Distress Syndrome. . . . .	33	7.3
45	8.3	Sudden Infant Death Syndrome. . . . .	19	4.2
20	3.7	Perinatal Disorders of Digestive System. . . . .	11	2.4
13	2.4	Infections specific to the Perinatal Period. . . . .	11	2.4
10	1.8	Pneumonia and Influenza. . . . .	6	1.3
9	1.7	Newborn affected by complications of placenta, cord or membranes. . . . .	7	1.6
4	0.7	Homicide. . . . .	12	2.7
97	17.9	All Other Causes. . . . .	88	19.5
541	100.0	Total. . . . .	451	100.0
<b>1 TO 14 YEARS</b>				
47	19.9	Acquired Immunodeficiency Syndrome (AIDS). . . . .	41	22.3
39	16.5	Accidents Except Drug Poisoning. . . . .	26	14.1
30	12.7	Malignant Neoplasms. . . . .	18	9.8
19	8.1	Congenital Anomalies. . . . .	20	10.9
18	7.6	Diseases of Nervous System. . . . .	10	5.4
15	6.4	Homicide. . . . .	12	6.5
13	5.5	Heart Diseases. . . . .	8	4.3
6	2.5	Chronic Obstructive Pulmonary Disease. . . . .	6	3.3
5	2.1	Benign and Unspecified Neoplasms. . . . .	6	3.3
4	1.7	Pneumonia and Influenza. . . . .	3	1.6
40	16.9	All Other Causes. . . . .	34	18.5
236	100.0	Total. . . . .	184	100.0
<b>15 TO 24 YEARS</b>				
283	49.9	Homicide. . . . .	36	17.3
67	11.8	Accidents Except Drug Poisoning. . . . .	24	11.5
33	5.8	Malignant Neoplasms. . . . .	33	15.9
43	7.6	Suicide. . . . .	15	7.2
37	6.5	Drug Dependence and Accidental Drug Poisoning. . . . .	8	3.8
15	2.6	Acquired Immunodeficiency Syndrome (AIDS). . . . .	18	8.7
18	3.2	Heart Diseases. . . . .	10	4.8
10	1.8	Diseases of Nervous System. . . . .	7	3.4
9	1.6	Congenital Anomalies. . . . .	4	1.9
7	1.2	Chronic Obstructive Pulmonary Disease. . . . .	4	1.9
45	7.9	All Other Causes. . . . .	49	23.6
567	100.0	Total. . . . .	208	100.0
<b>25 TO 34 YEARS</b>				
612	38.1	Acquired Immunodeficiency Syndrome (AIDS). . . . .	314	41.2
260	16.2	Homicide. . . . .	44	5.8
158	9.8	Drug Dependence and Accidental Drug Poisoning. . . . .	45	5.9
90	5.6	Malignant Neoplasms. . . . .	92	12.1
104	6.5	Accidents Except Drug Poisoning. . . . .	30	3.9
98	6.1	Suicide. . . . .	28	3.7
69	4.3	Heart Diseases. . . . .	54	7.1
19	1.2	Pneumonia and Influenza. . . . .	8	1.0
23	1.4	Alcohol Dependence. . . . .	4	0.5
13	0.8	Cerebrovascular Disease. . . . .	12	1.6
14	0.9	Diseases of Nervous System. . . . .	11	1.4
146	9.1	All Other Causes. . . . .	120	15.7
1,606	100.0	Total. . . . .	762	100.0

Note: The ten leading causes of death in each age group for both sexes combined are arranged in decreasing order of frequency.

Totals may not equal 100.0% due to rounding.

Males		35 TO 44 YEARS	Females	
Deaths	Percent		Deaths	Percent
1,508	46.4	Acquired Immunodeficiency Syndrome (AIDS) . . . . .	615	39.2
254	7.8	Malignant Neoplasms . . . . .	312	19.9
291	9.0	Drug Dependence and Accidental Drug Poisoning . . . . .	95	6.1
242	7.4	Heart Diseases . . . . .	101	6.4
154	4.7	Homicide . . . . .	35	2.2
96	3.0	Accidents Except Drug Poisoning . . . . .	29	1.8
95	2.9	Chronic Liver Disease and Cirrhosis . . . . .	30	1.9
95	2.9	Suicide . . . . .	20	1.3
35	1.1	Cerebrovascular Disease . . . . .	50	3.2
52	1.6	Pneumonia and Influenza . . . . .	28	1.8
428	13.2	All Other Causes . . . . .	254	16.2
3,250	100.0	Total . . . . .	1,569	100.0
45 TO 54 YEARS				
675	17.8	Malignant Neoplasms . . . . .	807	37.7
1,001	26.4	Acquired Immunodeficiency Syndrome (AIDS) . . . . .	290	13.6
752	19.8	Heart Diseases . . . . .	353	16.5
192	5.1	Drug Dependence and Accidental Drug Poisoning . . . . .	57	2.7
178	4.7	Chronic Liver Disease and Cirrhosis . . . . .	58	2.7
101	2.7	Cerebrovascular Disease . . . . .	67	3.1
71	1.9	Diabetes Mellitus . . . . .	70	3.3
108	2.8	Accidents Except Drug Poisoning . . . . .	32	1.5
72	1.9	Pneumonia and Influenza . . . . .	46	2.2
94	2.5	Alcohol Dependence . . . . .	23	1.1
554	14.6	All Other Causes . . . . .	335	15.7
3,798	100.0	Total . . . . .	2,138	100.0
55 TO 64 YEARS				
1,302	29.2	Malignant Neoplasms . . . . .	1,206	40.5
1,579	35.4	Heart Diseases . . . . .	874	29.3
300	6.7	Acquired Immunodeficiency Syndrome (AIDS) . . . . .	65	2.2
162	3.6	Cerebrovascular Disease . . . . .	118	4.0
121	2.7	Diabetes Mellitus . . . . .	128	4.3
158	3.5	Chronic Liver Disease and Cirrhosis . . . . .	63	2.1
94	2.1	Chronic Obstructive Pulmonary Disease . . . . .	111	3.7
103	2.3	Pneumonia and Influenza . . . . .	87	2.9
91	2.0	Accidents Except Drug Poisoning . . . . .	27	0.9
42	0.9	Hypertensive Disease . . . . .	24	0.8
51	1.1	Alcohol Dependence . . . . .	15	0.5
455	10.2	All Other Causes . . . . .	262	8.8
4,458	100.0	Total . . . . .	2,980	100.0
65 TO 74 YEARS				
2,870	42.9	Heart Diseases . . . . .	2,354	40.3
2,141	32.0	Malignant Neoplasms . . . . .	1,982	34.0
197	2.9	Cerebrovascular Disease . . . . .	216	3.7
191	2.9	Diabetes Mellitus . . . . .	221	3.8
207	3.1	Pneumonia and Influenza . . . . .	177	3.0
191	2.9	Chronic Obstructive Pulmonary Disease . . . . .	180	3.1
100	1.5	Accidents Except Drug Poisoning . . . . .	78	1.3
87	1.3	Chronic Liver Disease and Cirrhosis . . . . .	58	1.0
64	1.0	Hypertensive Disease . . . . .	63	1.1
78	1.2	Acquired Immunodeficiency Syndrome (AIDS) . . . . .	13	0.2
569	8.5	All Other Causes . . . . .	494	8.5
6,695	100.0	Total . . . . .	5,836	100.0
75 TO 84 YEARS				
3,768	50.6	Heart Diseases . . . . .	4,637	52.3
1,861	25.0	Malignant Neoplasms . . . . .	2,015	22.7
363	4.9	Pneumonia and Influenza . . . . .	420	4.7
230	3.1	Cerebrovascular Disease . . . . .	361	4.1
292	3.9	Chronic Obstructive Pulmonary Disease . . . . .	264	3.0
154	2.1	Diabetes Mellitus . . . . .	243	2.7
90	1.2	Accidents Except Drug Poisoning . . . . .	97	1.1
56	0.8	Hypertensive Disease . . . . .	107	1.2
50	0.7	Diseases of Nervous System . . . . .	67	0.8
48	0.6	Nephritis and Nephrosis . . . . .	40	0.5
541	7.3	All Other Causes . . . . .	613	6.9
7,453	100.0	Total . . . . .	8,864	100.0
85 AND OVER				
2,961	61.5	Heart Diseases . . . . .	6,899	66.5
692	14.4	Malignant Neoplasms . . . . .	1,043	10.1
358	7.4	Pneumonia and Influenza . . . . .	735	7.1
133	2.8	Cerebrovascular Disease . . . . .	410	4.0
137	2.8	Chronic Obstructive Pulmonary Disease . . . . .	173	1.7
66	1.4	Diabetes Mellitus . . . . .	180	1.7
79	1.6	Accidents Except Drug Poisoning . . . . .	131	1.3
43	0.9	Hypertensive Disease . . . . .	92	0.9
31	0.6	Septicemia . . . . .	74	0.7
27	0.6	Atherosclerosis . . . . .	68	0.7
286	5.9	All Other Causes . . . . .	570	5.5
4,813	100.0	Total . . . . .	10,375	100.0





Table 6.

**Deaths by Place of Death  
New York City, 1986-1996**

Place of Death	1986	1987	1988	1989	1990	1991	1992	1993	1994	1995	1996
Home.....	15,446	15,092	14,862	13,564	13,204	13,271	13,293	13,943	12,822	12,973	12,197
Hospital											
Voluntary.....	36,822	37,306	38,487	40,807	40,023	39,503	39,009	39,682	39,103	39,609	37,288
Proprietary.....	2,822	3,069	3,067	2,800	2,646	2,710	2,610	2,638	2,520	1,928	1,837
Municipal.....	11,003	11,392	11,579	10,957	10,202	9,376	8,517	8,845	8,231	7,710	7,046
Other Government.....	1,476	1,501	1,385	1,426	1,335	1,223	1,254	1,213	1,172	1,053	959
Nursing Home.....	5,416	5,279	5,679	3,790	3,891	3,791	3,848	4,564	5,110	5,551	5,753
Other Specified Place.....	2,717	2,809	2,758	2,613	2,574	2,547	2,468	2,516	2,080	1,945	1,704
Total.....	75,702	76,448	77,817	75,957	73,875	72,421	71,001	73,408	71,038	70,769	66,784

Table 7.

**Deaths by Ancestry and Borough of Residence  
New York City, 1996**

Ancestry	Borough of Residence						Non-Residents	Residence Unknown
	Total	Manhattan	Bronx	Brooklyn	Queens	Richmond		
Puerto Rican.....	5,449	1,292	2,070	1,427	440	82	116	22
Dominican.....	1,027	440	259	146	149	4	28	1
Colombian.....	212	36	14	19	126	3	14	-
Ecuadorian.....	201	34	34	40	84	1	8	-
Mexican.....	130	31	21	33	36	3	5	1
Cuban.....	485	186	79	49	144	4	23	-
Other Hispanic.....	1,203	211	229	344	307	30	49	33
African-American.....	14,530	3,320	3,135	4,848	2,537	221	400	69
American.....	15,114	3,468	1,816	3,731	3,561	1,139	1,369	30
Guyanese.....	348	9	36	142	157	1	3	-
Haitian.....	525	28	11	326	123	5	30	2
Jamaican.....	480	20	117	244	69	7	23	-
Trinidadian.....	198	8	12	128	35	4	11	-
All Other North, Central and South American	946	86	132	431	228	14	54	1
English.....	399	85	23	75	101	77	37	1
German.....	2,105	416	227	228	936	80	214	4
Irish.....	3,135	397	466	607	1,043	310	310	2
Italian.....	7,531	449	1,037	2,686	1,928	935	482	14
Polish.....	1,987	262	225	734	593	76	95	2
Russian.....	2,004	167	182	1,223	363	34	35	-
Other European.....	2,844	551	274	576	1,133	142	161	7
Chinese.....	1,194	466	25	297	347	23	35	1
Asian Indian.....	190	21	19	28	93	5	22	2
Korean.....	226	10	7	22	157	8	21	1
Filipino.....	165	25	5	17	81	15	21	1
Other Asian.....	466	78	40	129	156	8	54	1
Other & Not Stated.....	3,690	699	493	1,216	724	102	220	236
Total.....	66,784	12,795	10,988	19,746	15,651	3,333	3,840	431

Table 7A.

**Selected Characteristics of Deaths Due to Fatal Occupational Injuries  
New York City, 1996**

Characteristic	All Deaths	Sex		Age groups						
		Male	Female	< 20	20-24	25-34	35-44	45-54	55-64	65+
<b>Selected Events</b>										
Transportation incident.....	14	14	0	0	0	3	6	3	1	1
Assaults and violent acts.....	82	76	6	1	12	20	21	17	7	3
Homicide.....	75	70	5	1	10	19	19	16	7	2
Shooting.....	65	63	2	1	9	16	17	14	7	1
Falls.....	23	23	0	0	1	6	5	7	4	0
<b>Selected Industries</b>										
Construction.....	23	23	0	0	1	9	6	6	1	0
Taxicabs.....	16	16	0	0	2	2	6	5	1	0
Grocery stores.....	18	17	1	0	3	4	5	5	1	0
Eating and drinking places.....	11	11	0	1	3	2	3	2	0	0
Police and fire protection.....	7	7	0	0	0	3	4	0	0	0
<b>Race</b>										
White.....	78	74	4	0	4	17	20	22	10	5
Black.....	26	22	4	1	4	3	8	9	0	1
Other.....	44	43	1	1	6	16	12	5	3	1
Hispanic Ancestry.....	45	44	1	1	5	16	12	7	4	0
All Deaths.....	148	139	9	2	14	36	40	36	13	7

Note: Persons of Hispanic ancestry may be of any race. See Technical Notes.

**DEATHS DUE TO EXTERNAL CAUSES BY AGE AND SEX, NEW YORK CITY, 1996**

**Table 8. Accidents**

Type	All Ages	0-4		5-9		10-14		15-19		20-24		25-34		35-44		45-54		55-64		65-74		75+	
		Male	Female	Male	Female	Male	Female	Male	Female	Male	Female	Male	Female	Male	Female	Male	Female	Male	Female	Male	Female	Male	Female
Total	1,294	22	17	13	6	10	7	18	10	50	15	113	33	100	35	112	33	92	28	101	80	170	229
Work	37	-	-	-	-	-	-	-	-	1	-	10	-	8	-	12	-	5	-	1	-	-	-
Accidental drug poisoning	36	-	-	-	-	-	-	-	-	1	1	9	3	4	6	4	1	1	1	1	2	1	1
Firearms	3	-	-	-	-	-	-	-	-	1	-	2	-	-	-	-	-	-	-	-	-	-	-
Home																							
Poisoning (gas excepted)	11	1	-	-	-	-	-	-	-	1	-	2	-	1	-	2	1	1	-	-	-	1	1
Poisoning by gas and vapors	3	-	-	-	-	-	-	-	-	-	-	-	-	-	-	-	-	-	1	1	1	-	-
Falls	310	2	2	1	1	-	-	-	-	4	-	3	1	9	3	18	2	16	1	27	19	71	130
Fire and flames	111	5	5	3	2	-	1	-	1	1	1	8	4	3	4	10	3	5	3	9	13	11	19
Drowning	5	-	-	-	-	-	1	1	1	-	-	1	-	-	-	-	-	1	-	-	-	-	-
Suffocation	23	2	4	-	-	-	-	-	-	-	-	1	1	3	-	1	3	-	4	1	1	1	2
Other home accidents	14	-	-	-	1	1	-	1	-	-	-	-	-	-	-	3	-	1	1	-	1	2	3
Motor Vehicle																							
Injury to pedestrian	231	5	4	5	1	4	2	4	3	5	5	18	11	16	8	14	11	15	9	19	22	31	19
Collision with other motor vehicle	67	-	1	1	-	1	-	2	2	5	2	18	1	6	2	5	1	3	3	5	4	3	2
Collision with fixed object	46	1	-	-	-	-	-	-	-	10	1	13	1	4	3	2	-	5	1	3	-	2	-
Non-collision	5	-	-	-	-	-	1	-	-	2	-	1	-	-	-	1	-	-	-	-	-	-	-
Other motor vehicle accident	89	4	-	3	-	1	1	7	2	9	2	12	3	15	2	6	3	1	-	5	4	6	3
Public Place																							
Railroad and subway	22	-	-	-	-	-	-	-	-	2	2	5	-	5	-	3	-	4	-	-	-	1	-
Falls	155	-	-	-	-	1	1	1	-	4	-	4	2	14	3	23	1	17	3	14	5	26	36
Fire and flames	9	-	-	-	-	-	-	-	-	1	-	-	-	1	1	2	1	1	-	2	-	-	-
Drowning	10	1	-	-	-	1	-	2	-	-	-	1	-	1	-	1	-	1	-	1	-	1	-
Other	93	1	1	-	1	1	-	-	1	3	1	3	4	7	2	5	8	10	5	9	7	12	12
Late effects	14	-	-	-	-	-	-	-	-	-	-	2	2	3	1	1	-	2	-	-	1	1	1

**Table 9. Suicide**

Method	All Ages	0-4		5-9		10-14		15-19		20-24		25-34		35-44		45-54		55-64		65-74		75+	
		Male	Female	Male	Female	Male	Female	Male	Female	Male	Female	Male	Female	Male	Female	Male	Female	Male	Female	Male	Female	Male	Female
Total	557	-	-	-	-	2	-	12	5	31	10	98	28	95	20	64	27	55	10	34	21	34	11
Poisoning by solid or liquid substances	95	-	-	-	-	-	-	-	-	3	1	8	6	16	6	11	15	9	3	2	7	4	4
Poisoning by gases and vapors	8	-	-	-	-	-	-	-	-	-	-	1	-	2	-	2	-	-	-	1	-	2	-
Hanging, strangulation and suffocation	154	-	-	-	-	2	-	2	2	10	3	26	5	29	5	14	5	17	2	9	6	14	3
Submersion (drowning)	11	-	-	-	-	-	-	-	-	2	-	3	1	1	-	1	-	1	-	2	-	-	-
Firearms	125	-	-	-	-	-	-	8	2	8	3	32	5	17	1	14	2	20	-	8	1	4	-
Jumping before moving object	34	-	-	-	-	-	-	-	-	1	-	11	1	12	1	2	-	1	-	1	2	2	-
Cutting and piercing instruments	8	-	-	-	-	-	-	-	-	-	-	2	1	2	-	-	-	1	-	-	-	2	-
Jumping from high place	114	-	-	-	-	-	-	2	-	7	3	13	8	16	6	18	5	7	4	10	5	6	4
Other and unspecified means	8	-	-	-	-	-	-	1	-	-	-	2	1	-	1	2	-	-	-	1	-	-	-

**Table 10. Homicide and Legal Intervention**

Method	All Ages	0-4		5-9		10-14		15-19		20-24		25-34		35-44		45-54		55-64		65-74		75+	
		Male	Female	Male	Female	Male	Female	Male	Female	Male	Female	Male	Female	Male	Female	Male	Female	Male	Female	Male	Female	Male	Female
Total	1,018	11	22	4	0	4	2	117	17	166	19	260	44	154	35	61	25	35	5	12	6	11	8
Poisoning	1	1	-	-	-	-	-	-	-	-	-	-	-	-	-	-	-	-	-	-	-	-	-
Hanging and strangulation	50	-	3	1	-	-	-	-	1	2	3	8	2	5	10	2	4	2	-	1	1	5	-
Submersion (drowning)	2	1	1	-	-	-	-	-	-	-	-	-	-	-	-	-	-	-	-	-	-	-	-
Firearms	674	-	2	2	-	3	-	98	15	139	8	204	15	105	7	38	9	19	1	3	2	4	-
Cutting and piercing	155	1	1	-	-	1	1	14	-	17	6	32	18	23	10	10	8	7	1	2	1	1	1
Child battering	16	7	9	-	-	-	-	-	-	-	-	-	-	-	-	-	-	-	-	-	-	-	-
Fire and flames	10	-	-	-	-	1	1	-	-	-	-	2	3	-	-	1	-	-	-	1	1	-	-
Pushing from high place	6	-	2	1	-	-	-	-	-	-	-	-	-	1	-	2	-	-	-	-	-	-	-
Striking with object	25	-	1	-	-	-	-	3	-	1	-	4	4	3	1	1	1	2	1	2	-	1	
Fight, brawl, or rape	0	-	-	-	-	-	-	-	-	-	-	-	-	-	-	-	-	-	-	-	-	-	-
Late effects	5	-	-	-	-	-	-	-	-	-	-	3	-	1	-	-	-	1	-	-	-	-	-
Other and unspecified means	62	1	3	-	-	-	-	1	4	2	6	3	11	7	6	2	3	2	3	1	1	6	
Legal intervention, all	12	-	-	-	-	-	-	1	-	3	-	3	-	2	-	2	-	1	-	-	-	-	-

**Table 11. Other Injury, Undetermined Whether Accidentally or Purposely Inflicted**

See next page.



Table 13.

## Characteristics of Decedents With Selected Causes of Death, New York City, 1996

Cause of Death	Total	Percent of Total Deaths with Specified Characteristics								
		Ethnic Group						Male	Never Married	Age Under 20
		Puerto Rican	Other Hispanic	Asian	Other White	Other Black	Other & Unknown			
All Causes.....	66,784	8.2	4.9	3.1	57.0	25.5	1.5	50.0	23.9	2.5
AIDS.....	4,946	22.1	7.3	0.5	21.7	46.1	2.1	72.3	62.8	2.1
Chronic Liver Disease & Cirrhosis.....	825	23.6	7.9	1.7	39.3	25.6	1.9	70.3	30.8	0.1
Drug Dependence and Accidental Drug Poisoning.....	945	16.9	6.3	0.4	36.6	36.7	3.0	77.7	53.8	0.8
Motor Vehicle Accidents.....	438	8.0	11.0	9.4	45.9	24.4	1.4	68.0	45.4	12.6
Other Accidents.....	820	8.8	9.5	3.2	52.8	23.9	1.8	58.8	31.5	5.9
Suicide.....	557	10.4	10.2	8.8	54.0	15.1	1.4	76.3	45.4	3.4
Homicide.....	1,018	8.7	17.8	3.0	18.1	50.8	1.6	82.0	68.2	17.4
Injury Undetermined.....	153	6.5	7.8	5.9	38.6	30.7	10.5	69.9	47.7	10.5
All Other Causes.....	57,082	6.5	4.2	3.2	61.5	23.2	1.3	46.2	18.6	2.2

Table 14.

Life Expectancy at Specified Ages by Sex and Race  
New York City and the United States, 1980 and 1990

Exact Age	Male											
	New York City						United States					
	1980			1990			1980			1990		
	Total	White	Black	Total	White	Black	Total	White	Black	Total	White	Black
0	68.5	69.9	64.1	68.0	70.0	64.5	70.0	70.7	63.7	71.8	72.7	64.5
1	68.6	69.9	64.5	68.0	69.7	64.6	70.0	70.6	64.2	71.6	72.3	64.8
5	64.8	66.1	60.7	64.2	65.8	60.8	66.1	66.8	60.5	67.7	68.5	61.0
10	59.5	61.2	55.9	59.3	60.9	55.9	61.3	61.9	55.6	62.8	63.5	56.1
15	55.0	56.3	50.9	54.3	56.0	51.0	56.4	57.0	50.7	57.9	58.6	51.3
20	50.4	51.6	46.3	49.8	51.3	46.6	51.8	52.4	46.0	53.3	54.0	46.7
25	45.9	47.0	42.1	45.4	46.8	42.4	47.3	47.8	41.7	48.7	49.3	42.4
30	41.5	42.5	38.1	41.0	42.4	38.3	42.7	43.2	37.4	44.1	44.7	38.2
35	37.1	38.0	34.0	37.0	38.3	34.5	38.1	38.6	33.2	39.6	40.1	34.1
40	32.8	33.5	30.0	33.3	34.5	31.2	33.5	34.0	29.1	35.1	35.6	30.1
45	28.6	29.2	26.2	29.6	30.7	27.9	29.1	29.4	25.2	30.7	31.1	26.2
50	24.6	25.1	22.7	25.9	26.8	24.4	24.9	25.2	21.6	26.4	26.7	22.5
55	20.9	21.2	19.5	22.2	23.0	21.1	21.0	21.2	18.4	22.3	22.5	19.0
60	17.4	17.5	16.5	18.7	19.3	18.0	17.4	17.5	15.5	18.5	18.7	15.9
65	14.2	14.3	13.9	15.4	15.9	15.1	14.1	14.2	12.9	15.1	15.2	13.2
70	11.4	11.3	11.5	12.5	12.8	12.6	11.3	11.3	10.5	12.0	12.1	10.7
75	9.0	8.9	9.5	9.8	10.0	10.5	8.8	8.8	8.3	9.4	9.4	8.6
80	6.8	6.8	7.6	7.5	7.6	8.6	6.7	6.7	6.3	7.1	7.1	6.7
85	5.4	5.3	6.8	5.9	5.9	7.2	5.0	5.0	4.5	5.2	5.2	5.0

Exact Age	Female											
	New York City						United States					
	1980			1990			1980			1990		
	Total	White	Black	Total	White	Black	Total	White	Black	Total	White	Black
0	76.4	77.5	73.5	77.2	78.8	75.6	77.5	78.1	72.3	78.8	79.4	73.6
1	76.5	77.3	73.8	77.2	78.5	75.7	77.4	77.9	72.7	78.4	78.9	73.8
5	72.6	73.5	70.0	73.3	74.6	71.9	73.5	74.0	69.0	74.5	75.0	70.0
10	67.7	68.6	65.2	68.4	69.7	66.9	68.6	69.1	64.1	69.6	70.1	65.1
15	62.8	63.6	60.2	63.5	64.8	62.0	63.7	64.2	59.2	64.7	65.2	60.2
20	57.9	58.7	55.4	58.6	59.9	57.1	58.9	59.4	54.3	59.8	60.3	55.3
25	53.1	53.9	50.6	53.8	55.0	52.4	54.0	54.5	49.5	55.0	55.4	50.6
30	48.3	49.1	46.0	49.1	50.3	47.7	49.2	49.7	44.8	50.1	50.6	45.9
35	43.6	44.3	41.4	44.5	45.6	43.3	44.4	44.9	40.2	45.3	45.8	41.3
40	38.9	39.5	36.8	40.0	41.0	39.1	39.7	40.1	35.7	40.6	41.0	36.8
45	34.4	34.9	32.6	35.5	36.4	34.8	35.0	35.4	31.4	35.9	36.2	32.4
50	30.0	30.4	28.5	31.1	31.9	30.6	30.6	30.9	27.3	31.3	31.6	28.2
55	25.8	26.1	24.6	26.9	27.5	26.6	26.3	26.5	23.4	27.0	27.2	24.2
60	21.8	22.0	21.0	22.8	23.4	22.7	22.2	22.4	19.8	22.8	23.0	20.5
65	18.1	18.2	17.6	19.1	19.5	19.2	18.3	18.5	16.5	18.9	19.1	17.2
70	14.5	14.5	14.5	15.5	15.8	16.0	14.8	14.8	13.4	15.3	15.4	14.1
75	11.3	11.3	11.7	12.3	12.4	13.2	11.5	11.5	10.7	12.0	12.0	11.2
80	8.5	8.4	9.3	9.4	9.4	10.6	8.6	8.6	8.2	9.0	9.0	8.6
85	6.5	6.3	7.7	7.0	7.0	8.6	6.4	6.3	6.1	6.4	6.4	6.3

Note: Life expectancy figures for 1980 are different from those published in 1990 and earlier. Life expectancy figures for 1950, 1960 and 1970 appear in the annual Vital Statistics Summaries for 1990 and earlier. Total includes races other than white and black. See Technical Notes.

Table 15.

## Average Yearly Age-Sex-Specific Death Rates per 1,000 Population, New York City, 1909-1991

Age	1909-1911		1919-1920		1929-1931		1939-1941		1949-1951		1959-1961		1969-1971		1979-1981		1989-1991	
	Male	Female	Male	Female	Male	Female	Male	Female	Male	Female	Male	Female	Male	Female	Male	Female	Male	Female
0-4	50.2	43.2	32.4	26.5	19.4	15.4	11.3	8.8	7.6	6.0	8.2	6.4	6.6	5.3	4.1	3.4	3.8	3.1
5-9	4.2	3.9	3.8	3.1	2.5	2.0	1.0	0.8	0.6	0.5	0.7	0.5	0.6	0.4	0.4	0.2	0.2	0.2
10-14	2.4	2.3	2.4	2.2	1.7	1.3	0.9	0.7	0.6	0.4	0.5	0.3	0.5	0.3	0.3	0.2	0.3	0.2
15-19	3.9	3.1	4.0	3.7	2.6	2.2	1.3	1.1	0.9	0.6	0.9	0.5	1.8	0.7	1.3	0.5	1.7	0.4
20-24	5.3	4.6	5.8	5.4	3.4	3.2	1.7	1.6	1.3	0.9	1.5	0.7	2.9	0.9	2.4	0.7	2.5	0.7
25-29	6.9	5.9	6.5	6.9	3.8	3.4	2.2	2.0	1.4	1.2	1.7	1.0	2.8	1.1	2.7	0.8	3.2	1.0
30-34	9.6	7.6	7.7	7.0	5.1	4.1	3.1	2.4	2.0	1.6	2.4	1.6	3.3	1.7	3.1	1.1	5.0	1.8
35-39	13.0	9.3	9.2	7.3	7.0	5.0	4.5	3.2	3.2	2.2	3.5	2.3	4.8	2.5	3.7	1.6	7.4	2.4
40-44	16.5	11.2	10.9	9.0	10.1	6.9	7.0	4.8	5.5	3.6	5.6	3.5	6.7	3.6	5.2	2.5	8.4	2.6
45-49	20.8	14.3	15.2	12.1	14.8	10.5	11.7	7.4	8.9	5.3	8.6	5.0	9.5	5.3	7.8	3.9	9.0	3.5
50-54	26.5	19.1	20.6	16.3	22.0	15.0	17.2	11.5	14.5	8.3	13.7	7.2	13.5	7.3	11.0	5.8	11.1	5.3
55-59	37.0	28.8	30.1	24.8	32.0	23.4	25.9	17.5	22.6	12.8	19.7	9.8	19.8	9.9	15.6	8.4	14.5	7.6
60-64	51.4	44.1	40.8	33.8	44.7	35.3	37.9	26.8	32.9	20.5	30.0	15.8	28.3	13.4	23.2	12.7	20.1	11.6
65-69	68.5	58.9	60.1	55.0	62.0	50.2	55.0	40.8	46.2	29.7	43.4	24.2	41.1	20.3	33.4	17.8	28.5	16.9
70-74	89.6	81.2	85.1	79.5	84.3	73.3	78.9	62.5	68.0	49.7	61.1	40.7	57.3	32.6	49.9	27.3	41.9	25.3
75-79	127.3	114.4	116.2	107.6	120.7	109.2	111.4	93.3	95.9	77.0	87.7	65.6	83.1	55.3	71.0	42.7	60.6	37.8
80-84	167.4	159.6	162.6	143.6	170.9	151.2	149.8	141.5	134.0	121.2	138.9	117.1	120.3	91.7	109.9	75.9	95.9	62.1
85 & Over	257.4	232.3	224.8	210.2	242.8	227.5	230.5	222.2	202.8	183.8	206.6	198.3	167.0	155.6	185.2	154.2	169.6	142.9

Note: Rates for 1979-1981 and 1989-1991 are based on deaths to New York City residents only, regardless of place of occurrence, while those for previous years included all events in New York City, regardless of the residence of the decedents. See Technical Notes.

Table 16.

Average Yearly Age-Sex-Race Adjusted Death Rates for Selected Causes per 100,000 Population  
New York City, 1901-1991

Cause of Death	1901-1903	1909-1911	1919-1920	1929-1931	1939-1941	1949-1951	1959-1961	1969-1971	1979-1981	1989-1991
All causes	2,324.2	1,934.1	1,691.4	1,449.0	1,128.1	885.8	813.3	771.1	549.3	606.6
Respiratory tuberculosis	241.0	191.4	143.7	73.7	48.6	25.2	7.3	3.0	0.8	1.2
Other forms of tuberculosis	31.2	25.2	22.0	10.9	5.2	2.1	0.5	0.3	0.2	0.5
Influenza and pneumonia	302.8	260.8	301.7	178.6	60.3	30.7	36.4	29.0	15.2	22.2
Malignant neoplasms	116.8	124.8	134.3	156.0	176.9	170.6	162.9	161.2	126.0	128.0
Diabetes	23.3	25.4	26.5	35.8	43.6	17.0	14.8	15.9	10.3	7.1
Appendicitis	13.4	13.6	14.6	16.9	9.4	2.3	1.2	0.5	0.2	0.1
Nephritis	244.8	181.9	141.6	63.3	52.6	6.7	5.5	3.5	2.3	4.9
Diseases of circulatory system	258.6	383.2	427.7	506.7	421.1	404.8	355.8	306.6	239.1	228.7
Chronic liver disease and cirrhosis	*	*	*	*	*	*	*	*	23.5	11.8
Chronic obstructive pulmonary diseases	*	*	*	*	*	*	*	*	9.3	13.1
AIDS	*	*	*	*	*	*	*	*	*	55.0
Other HIV	*	*	*	*	*	*	*	*	*	1.6
Total accidents	108.2	87.8	73.8	81.3	55.9	38.4	28.1	22.7	18.2	21.6
Auto accidents	*	*	14.9	22.6	12.8	7.3	7.7	11.0	8.4	9.4
Other accidents	*	*	58.9	58.7	43.1	31.0	20.3	11.6	9.8	12.1
Suicide	26.8	21.2	14.1	21.3	14.3	9.7	9.2	6.4	9.4	9.0
Homicide	3.6	5.1	6.2	8.0	4.4	4.0	5.3	14.0	21.8	22.6

Note: Rates for 1979-1981 and 1989-1991 are based on deaths to New York City residents only, regardless of place of occurrence, while those for previous years included all events in New York City, regardless of the residence of the decedents. See Technical Notes.

For 1901-1903 and 1909-1911 rates are adjusted for age and sex. For other years, rates are adjusted for age, sex and race (white and others). Standard is United States population, 1940.

\* Data are not available or not applicable until a later time period.

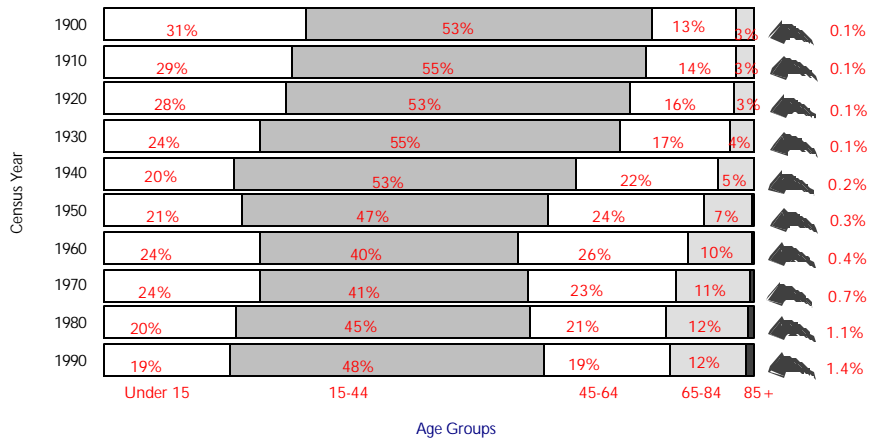


Figure 1. Changes in Age Composition of the Population New York City, 1900-1990

The age composition of the New York City population reflects changes in life expectancy, and natural historic trends. From 1900 to 1990, the proportion of city residents age 45 and over doubled, from 16% to 32%; the increase was greatest in the oldest age group, those 85 & over. The effect of the economic depression of the 1930's on the number of live births is seen in the lower percentage of residents under age 15 in 1940, while the post World War II baby boom increased this segment rapidly after 1950.

Figure 2. Age and Sex Composition of the Population New York City, 1990

This age-sex pyramid shows that there are more females than males in the New York City 1990 population, and that the excess is greater at older ages. The smaller segment of both males and females in age group 5-9 years reflect the lower number of births in the early 1980's, compared to the larger number in the second half of the 1980's.

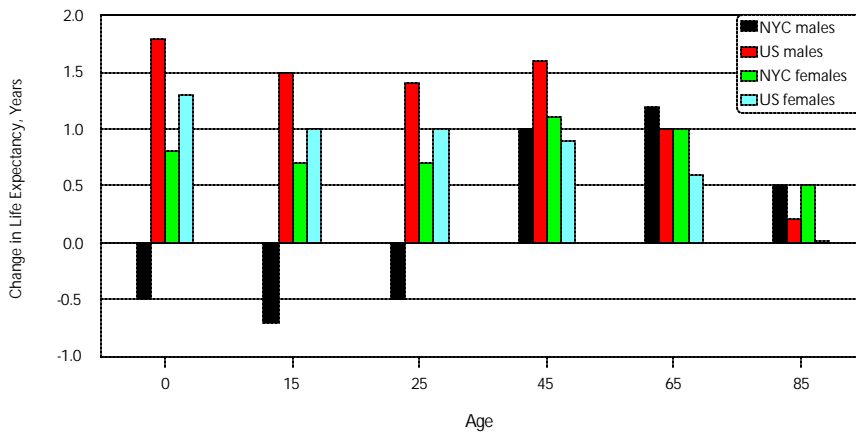
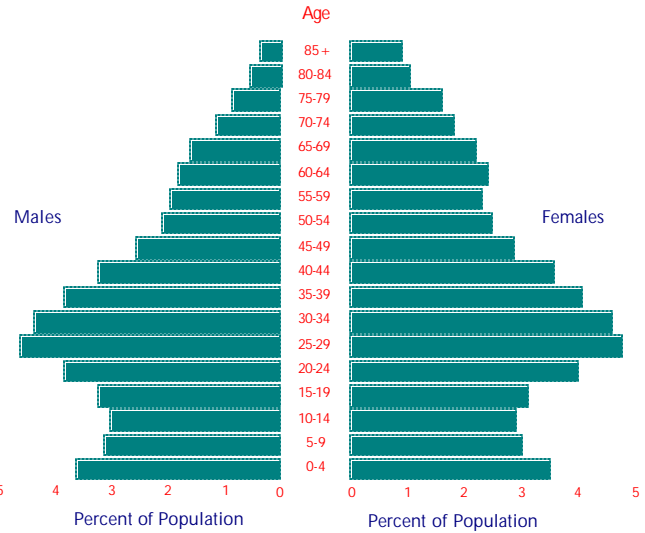
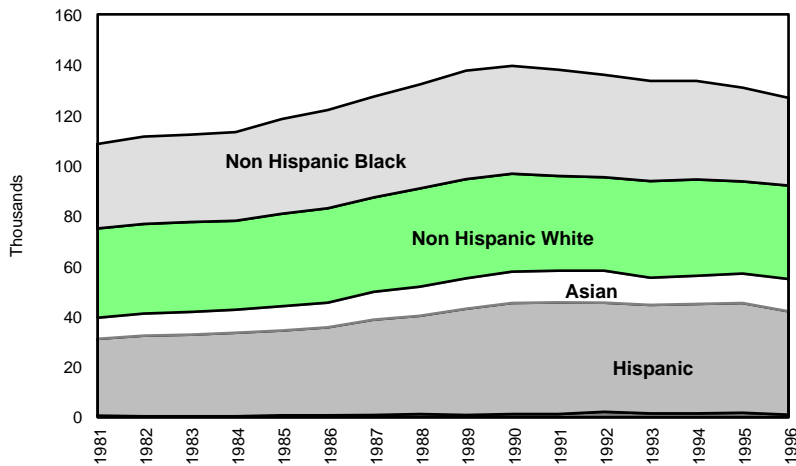


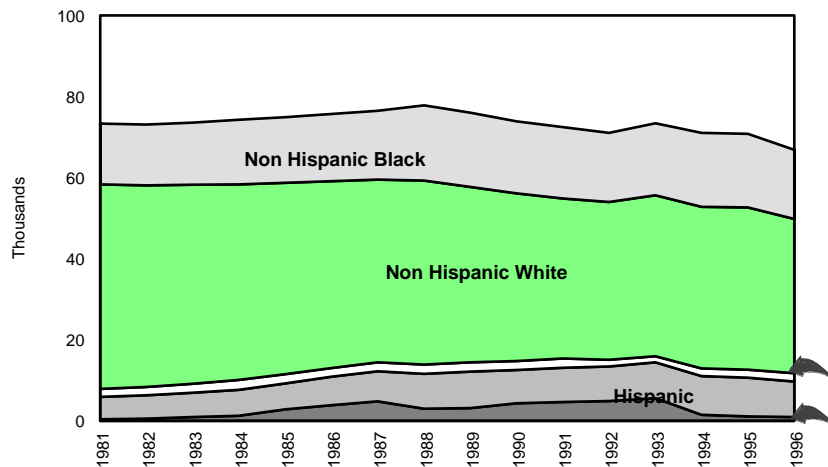
Figure 3. Changes in Life Expectancy at Selected Ages by Sex, 1980 and 1990 New York City and United States

Between 1980 and 1990, life expectancy for male New York City residents at birth, at ages 15 and 25 declined about one half year, while life expectancy for all United States males at these ages increased about one and one half years. Life expectancy for New York City females increased but less than for all United States females. At selected older ages New York City male residents showed somewhat greater increases in life expectancy than did males nationwide. New York City female residents achieved greater gains in life expectancy than did all United States females at these later ages. The decline in life expectancy among New York City males has been attributed to deaths due to AIDS and related infections.



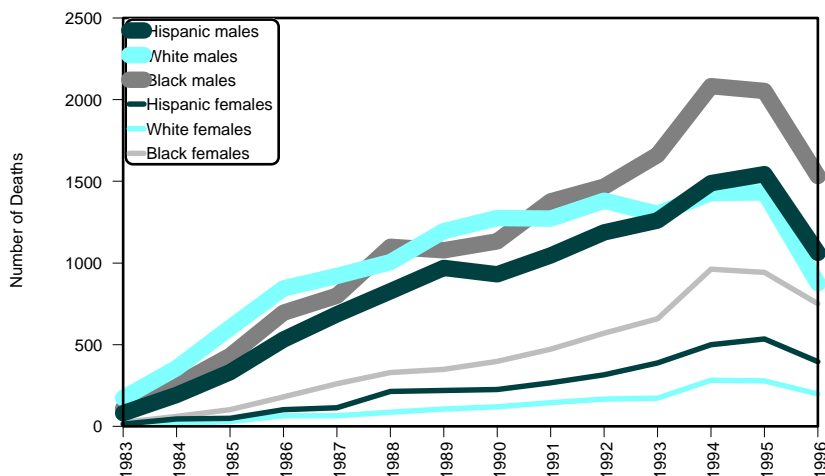
**Figure 4.** Live Births by Mother's Ethnic Group  
New York City, 1981-1996

The total number of live births registered in New York City rose 30% during the 1980's from 107,066 in 1980 to 139,630 in 1990. This was the highest number reached since 1970. During the 1990's, live births declined 9%. The largest year-to-year decline, from 131,009 in 1995 to 126,901 in 1996, was 3.1%. Beginning in 1990, there were more births to Hispanic women than to any other group. Births to Asian mothers showed the largest proportional increase from 1981 to 1996, almost 51%. Births to both non-Hispanic black and non-Hispanic white women peaked in 1989, and declined slightly thereafter.



**Figure 5.** Deaths by Ethnic Group of Decedent  
New York City, 1981-1996

The number of non-Hispanic white decedents declined from two-thirds of all decedents to just over half from 1981 to 1996. Deaths among non-Hispanic blacks now constitute about one-quarter of New York City deaths.



**Figure 6.** Deaths Due to AIDS by Sex and Selected Ethnic Group  
New York City, 1983-1996

The number of deaths due to AIDS declined 29% from 1995 to 1996. Deaths declined 31% among males and 23% among females. Deaths declined among all ethnic groups as well. The decline is attributed to the introduction of new drugs, protease inhibitors, and to increased access to medical care under the Ryan White Care Act.

Table 17.

## Deaths and Crude Death Rates per 100,000 Population from

	ANNUAL										
	1901-1905	1906-1910	1911-1915	1916-1920	1921-1925	1926-1930	1931-1935	1936-1940	1941-1945	1946-1948	1949-1951
Cause (ICD-9 Codes <sup>(1)</sup> )											
Infant deaths (under 1 year)	15,611	16,609	14,060	12,004	8,895	7,662	5,521	4,079	3,828	4,298	3,882
Rate per 1,000 live births	120.8	115.2	100.0	88.2	68.9	61.0	52.0	39.8	30.3	26.8	24.5
Neonatal deaths (under 28 days)	**	**	5,143	4,894	4,309	3,892	3,152	2,631	2,764	3,298	2,989
Rate per 1,000 live births	**	**	37.4	36.0	33.0	31.0	29.7	25.7	21.9	20.5	18.9
Early neonatal deaths (under 7 days)	**	**	**	**	**	**	**	2,110	2,338	2,845	2,604
Rate per 1,000 live births	**	**	**	**	**	**	**	20.5	18.5	17.7	16.4
Fetal deaths 28 weeks gestation & over	**	**	**	**	**	**	**	2,589	2,709	2,902	2,441
Ratio per 1,000 live births	**	**	**	**	**	**	**	25.3	21.4	18.1	15.4
Perinatal mortality rate <sup>(2)</sup>	**	**	**	**	**	**	**	44.7	39.1	35.1	31.3
Complications of pregnancy, childbirth and the puerperium (630-676)	694	745	694	664	689	651	608	372	255	178	115
Rate per 10,000 live births	53.7	51.7	49.4	48.8	52.8	51.8	57.3	36.3	20.2	11.1	7.3
Respiratory tuberculosis (010-012)	8,154	8,832	8,745	7,915	4,937	4,574	4,068	3,680	3,281	2,932	2,173
Rate	215.4	197.5	173.2	144.1	80.0	68.2	57.3	50.0	43.2	37.7	27.4
Other forms of tuberculosis (013-018)	**	**	**	**	**	**	**	**	**	225	174
Rate	**	**	**	**	**	**	**	**	**	2.9	2.2
Acquired immunodeficiency syndrome (042) <sup>(3)</sup>	**	**	**	**	**	**	**	**	**	**	**
Rate	**	**	**	**	**	**	**	**	**	**	**
Measles (055)	616	925	630	559	405	255	107	31	14	16	10
Rate <sup>(4)</sup>	144.0	191.8	119.8	100.5	73.2	46.8	21.4	6.5	2.6	2.4	1.4
Malignant neoplasms, all (140-208)	2,621	3,334	4,256	4,993	6,229	7,637	9,062	11,257	13,169	14,627	15,556
Rate	69.2	74.5	84.3	90.9	100.9	113.9	127.6	152.9	173.3	188.2	196.0
Trachea, bronchus and lung, male (162)	**	**	**	**	**	**	**	**	**	828	847
Rate	**	**	**	**	**	**	**	**	**	21.9	22.2
Trachea, bronchus and lung, female (162)	**	**	**	**	**	**	**	**	**	220	179
Rate	**	**	**	**	**	**	**	**	**	5.5	4.4
Breast, female (174)	**	**	**	**	**	**	**	**	**	1,429	1,476
Rate	**	**	**	**	**	**	**	**	**	35.9	36.4
Diabetes mellitus (250)	520	690	916	1,063	1,284	1,624	2,140	2,787	3,131	3,423	1,583
Rate	13.7	15.4	18.1	19.4	20.8	24.2	30.1	37.9	41.2	44.0	19.9
Circulatory system (390-459)	5,954	9,148	12,699	14,792	18,114	21,815	23,706	25,711	30,886	32,539	36,206
Rate	157.3	204.5	251.5	269.3	293.3	325.5	333.8	349.2	406.6	418.7	456.3
Cerebrovascular disease (430-438)	2,593	1,790	970	834	719	723	1,333	3,846	3,611	3,710	5,099
Rate	68.4	40.0	19.2	15.2	11.6	10.8	20.2	52.2	47.5	47.7	64.3
Pneumonia & Influenza (480-487)	10,425	10,985	10,528	17,136	8,935	9,989	8,205	5,337	3,453	3,014	2,469
Rate	275.4	245.6	208.5	312.0	144.7	149.0	115.5	72.5	45.5	38.8	31.2
Other respiratory (460-478, 490-519)	3,224	2,307	1,458	1,407	689	622	594	536	492	424	450
Rate	85.2	51.6	38.9	25.6	11.2	9.3	8.4	7.3	6.5	5.5	5.7
Chronic liver disease & cirrhosis (571)	814	1,076	900	500	338	413	584	922	1,052	1,500	1,500
Rate	21.5	24.1	17.8	9.1	5.5	6.2	8.2	12.5	13.8	17.5	19.2
Nephritis, nephrosis, etc (580-589)	5,752	5,600	5,499	5,676	4,108	3,411	3,608	3,675	3,081	2,574	570
Rate	151.9	125.2	108.9	103.4	50.9	50.8	50.9	40.6	40.6	33.1	7.2
Drug dependence (304)	**	**	**	**	**	**	**	**	**	**	**
Rate	**	**	**	**	**	**	**	**	**	**	**
Accidental drug poisoning <sup>(5)</sup>	**	**	**	**	**	**	**	**	**	**	**
Rate	**	**	**	**	**	**	**	**	**	**	**
Motor vehicle accidents (E810-E825)	**	**	253	658	929	1,175	1,167	920	728	635	600
Rate	**	**	5.0	12.0	15.0	17.5	16.4	12.5	9.6	8.2	7.6
Home Accidents	**	**	**	**	**	**	**	1,546	1,823	1,941	1,699
Rate	**	**	**	**	**	**	**	21.0	24.0	25.0	21.4
Other accidents (Rest of E800-E949)	3,521	3,549	3,516	3,426	3,138	3,574	3,205	3,107	3,091	3,255	2,707
Rate	93.0	79.3	69.3	62.4	50.8	53.3	45.1	42.2	40.7	41.9	34.3
Suicide (E950-E959)	761	825	686	742	842	1,163	1,369	1,191	907	930	863
Rate	20.1	18.4	17.2	13.5	13.6	17.4	19.3	16.2	11.9	12.0	10.9
Homicide (E960-E978, E990-E999)	143	247	293	271	334	405	522	351	265	362	318
Rate	3.8	5.5	5.8	4.9	5.4	6.0	7.4	4.5	3.5	4.7	4.0
Injury, undetermined whether accidentally or purposely inflicted (E980-E989)	**	**	**	**	**	**	**	**	**	**	**
Rate	**	**	**	**	**	**	**	**	**	**	**
Alzheimer's disease (331.0)	**	**	**	**	**	**	**	**	**	**	**
Rate	**	**	**	**	**	**	**	**	**	**	**

\*\* Data are not available or not applicable until a later time period.

(1) Numbers following causes are codes of the International Classification of Diseases, Ninth Revision, fetal deaths 28 weeks and over + infant deaths under 7 days

(2) Perinatal mortality rate =  $\frac{\text{fetal deaths 28 weeks and over} + \text{live births}}{\text{live births}} \times 1,000$

(3) Acquired immunodeficiency syndrome (AIDS) was first reported as a cause of death in 1982. From 1982 to 1986, the ICD code was 279.1; beginning 1987 it is code 042.

(4) Rate per 100,000 population under 5 years of age.

(5) Accidental drug poisoning includes ICD codes E850.0, E854.1, E855. 2, E858. 8.

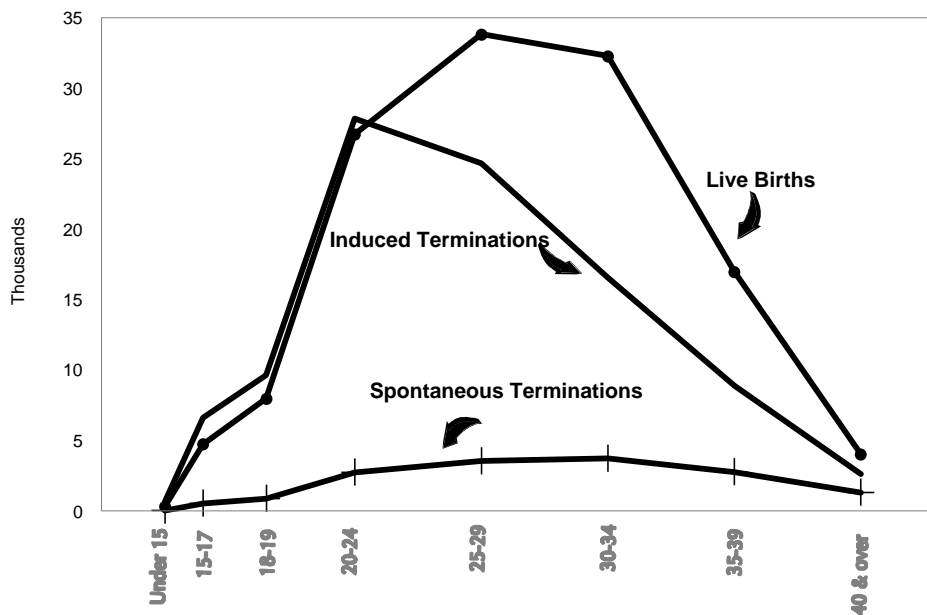
(6) Data for 1982-1985.

(7) Rate less than 0.05.



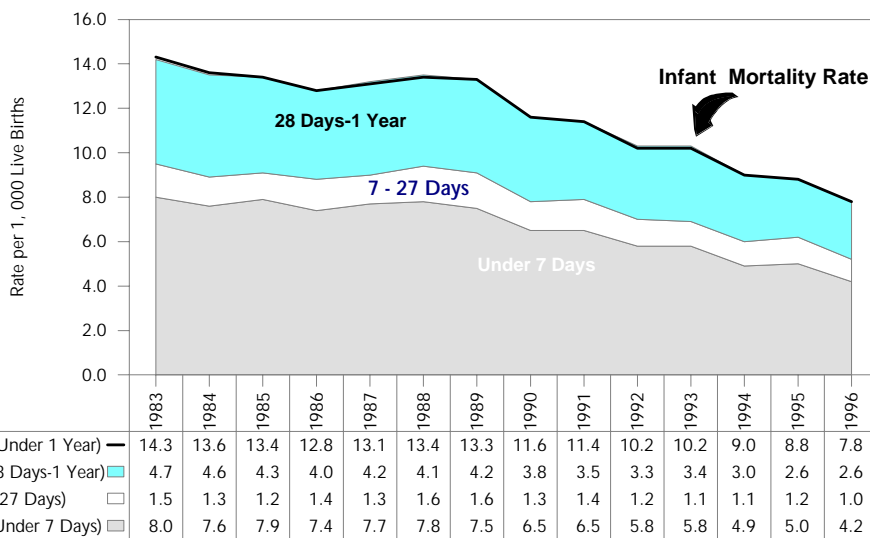
Selected Causes, New York City, 1901-1996

AVERAGE																		
1952-1955	1956-1960	1961-1965	1966-1970	1971-1975	1976-1980	1981-1985	1986	1987	1988	1989	1990	1991	1992	1993	1994	1995	1996	
4,021	4,290	4,333	3,477	2,312	1,875	1,624	1,566	1,673	1,770	1,827	1,620	1,575	1,390	1,366	1,207	1,155	992	
24.6	25.7	26.2	23.6	19.9	17.4	14.4	12.8	13.1	13.4	13.3	11.6	11.4	10.2	10.2	9.0	8.8	7.8	
3,032	3,220	3,226	2,602	1,714	1,333	1,097	1,078	1,139	1,232	1,253	1,091	1,089	941	917	804	811	656	
18.5	19.3	19.5	17.7	14.8	12.3	9.7	8.8	8.9	9.3	9.1	7.8	7.9	6.9	6.9	6.0	6.2	5.2	
2,713	2,909	2,922	2,351	1,480	1,131	927	909	977	1,027	1,039	908	896	783	769	660	657	528	
16.6	17.4	17.7	16.0	12.8	10.5	8.2	7.4	7.7	7.8	7.5	6.5	6.5	5.8	5.8	4.9	5.0	4.2	
2,310	2,362	2,276	1,885	1,288	835	719	643	741	689	721	696	648	970	692	589	533	580	
14.1	14.1	13.8	12.8	11.1	7.7	6.4	5.3	5.8	5.2	5.2	5.0	4.7	7.1	5.2	4.4	4.1	4.6	
30.2	31.1	31.0	28.4	23.6	18.1	14.5	12.7	13.4	10.0	12.7	11.4	11.1	12.8	10.9	9.3	9.0	8.7	
102	107	109	73	36	28	33	29	28	26	29	35	24	30	20	29	26	22	
6.2	6.4	6.6	5.0	3.1	2.6	2.9	2.4	2.2	2.0	2.1	2.5	1.7	2.2	1.5	2.2	2.0	1.7	
1,178	824	624	432	235	141	125	160	154	200	173	182	197	155	135	113	75	46	
15.0	10.6	8.0	5.5	3.1	2.0	1.7	2.2	2.1	2.8	2.4	2.5	2.7	2.1	1.8	1.5	1.0	0.6	
97	52	43	39	32	22	35	26	65	46	63	74	57	45	31	20	19	21	
1.2	0.7	0.6	0.5	0.4	0.3	0.5	0.4	0.9	0.6	0.9	1.0	0.8	0.6	0.4	0.3	0.3	0.3	
**	**	**	**	**	**	**	768 (6)	2,650	3,159	3,739	4,193	4,479	5,019	5,592	6,002	6,956	6,954	4,946
12	12	8	2	1	0	0	0	0	0	0	3	6	1	0	0	0	1	
1.8	1.8	1.1	0.2	0.2	-	-	-	-	-	-	(7)	0.1	(7)	-	-	-	(7)	
16,553	16,869	17,398	17,814	17,315	16,549	15,889	15,861	15,822	15,655	15,208	15,513	15,255	15,228	15,040	15,298	15,136	14,591	
210.6	216.1	222.1	226.3	226.3	228.7	222.3	219.6	218.3	215.3	208.4	211.9	208.3	208.0	205.4	208.9	206.7	199.3	
1,021	1,157	1,294	1,890	2,434	2,387	2,217	2,126	2,266	2,281	2,150	2,184	2,138	2,097	2,094	2,120	1,966	1,967	
27.0	30.9	34.8	51.0	68.1	71.0	66.7	63.0	66.9	67.0	62.8	63.5	62.2	61.0	60.9	61.7	57.2	57.2	
228	261	303	474	777	970	1,169	1,289	1,313	1,275	1,318	1,378	1,403	1,420	1,460	1,383	1,462	1,420	
5.6	6.4	7.4	11.4	19.1	25.0	30.6	33.5	34.0	33.0	34.0	35.5	36.1	36.6	37.6	35.6	37.6	36.6	
1,517	1,573	1,694	1,787	1,723	1,622	1,533	1,526	1,499	1,581	1,545	1,532	1,496	1,518	1,490	1,483	1,561	1,504	
37.3	38.7	41.3	42.9	42.3	41.9	40.1	39.6	38.9	40.9	39.9	39.4	38.5	39.1	38.4	38.2	40.2	38.7	
1,644	1,581	1,789	1,867	2,064	1,547	1,436	1,370	1,332	1,302	997	991	998	1,055	1,216	1,760	1,713	1,538	
20.9	20.3	22.9	23.7	27.0	21.4	20.1	19.0	18.4	17.9	13.7	13.5	13.6	14.4	16.6	24.0	23.4	21.0	
37,724	38,988	39,943	41,981	40,639	37,978	37,818	35,246	33,967	33,793	32,665	31,966	31,971	32,096	33,601	31,048	31,656	30,995	
479.9	499.5	510.2	532.4	531.1	524.8	529.1	488.0	468.7	464.7	447.6	436.5	436.6	438.3	458.9	424.0	432.3	423.3	
5,688	6,013	6,174	6,277	5,433	4,174	3,194	3,230	2,946	2,856	2,893	2,709	2,556	2,189	2,278	2,155	2,100	2,114	
72.4	77.0	78.9	79.7	71.0	57.7	44.7	44.7	40.7	39.3	39.6	37.0	34.9	29.9	31.1	29.4	28.7	28.9	
2,664	3,459	3,394	3,562	3,164	3,000	2,740	3,257	3,175	3,327	3,397	3,612	3,172	2,719	3,029	2,541	2,591	2,702	
33.9	44.3	43.4	45.2	41.4	41.5	38.3	45.1	43.8	45.8	46.6	49.3	43.3	37.1	41.4	34.7	35.4	36.9	
461	651	960	1,425	1,627	1,583	1,941	2,525	2,513	2,548	2,541	2,408	2,087	1,881	1,959	1,889	1,900	1,951	
5.9	8.3	12.3	18.1	21.3	21.9	27.2	35.0	34.7	35.0	34.8	32.9	28.5	25.7	26.8	25.8	25.9	26.6	
1,440	1,858	2,386	2,936	2,440	2,185	1,789	1,532	1,432	1,377	1,086	1,016	958	990	959	903	921	825	
18.3	23.8	30.5	37.3	31.9	30.2	25.0	21.2	19.8	18.9	14.9	13.9	13.1	13.5	13.1	12.3	12.6	11.3	
556	573	509	447	372	381	383	689	791	931	970	699	450	327	327	238	213	296	
7.1	7.3	6.5	5.7	4.9	5.3	5.4	9.5	10.9	12.8	13.3	9.5	6.1	4.5	4.5	3.3	2.9	4.0	
81	96	263	551	677	414	573	767	956	1,208	591	413	781	803	1,083	1,033	1,033	909	
1.0	1.2	3.4	7.0	8.8	5.7	8.0	10.6	13.2	16.6	8.1	5.6	10.7	11.0	14.8	14.1	14.1	12.4	
**	**	**	**	**	**	**	1	0	2	429	282	59	55	62	35	32	36	
634	655	714	887	834	606	477	514	622	618	663	704	631	586	551	500	501	438	
8.1	8.4	9.1	11.3	10.9	8.4	6.7	7.1	8.6	8.5	9.1	9.6	8.6	8.0	7.5	6.8	6.8	6.0	
1,568	1,095	951	871	755	525	486	555	485	603	752	552	517	472	525	513	512	479	
19.9	14.0	12.1	11.1	9.9	7.3	6.8	7.7	6.7	8.3	10.3	7.5	7.1	6.4	7.2	7.0	7.0	6.5	
2,450	2,091	1,947	1,730	1,239	926	812	791	677	857	1,151	922	364	428	355	398	423	341	
31.2	26.8	24.9	22.0	16.2	12.8	11.4	11.0	9.3	11.8	15.8	12.6	5.0	5.8	4.8	5.4	5.8	4.7	
649	711	908	680	641	711	603	593	502	557	703	646	649	605	558	605	577	557	
8.3	9.1	11.6	8.6	8.4	9.8	8.4	8.2	6.9	7.7	9.6	8.8	8.9	8.3	7.6	8.3	7.9	7.6	
340	366	592	992	1,663	1,700	1,763	1,635	1,691	1,943	1,970	2,272	2,209	2,041	2,007	1,607	1,209	1,018	
4.3	4.7	7.6	12.6	21.7	23.5	24.7	22.6	23.3	26.7	27.0	31.0	30.2	27.9	27.4	21.9	16.5	13.9	
**	**	**	946	1,062	699	696	661	790	727	186	158	144	141	200	176	146	153	
**	**	**	10.9	13.9	9.7	9.7	9.2	10.9	10.0	2.5	2.2	2.0	1.9	2.7	2.4	2.0	2.1	
**	**	**	**	**	**	**	**	**	**	**	**	76	73	78	94	101	77	
												1.0	1.0	1.1	1.3	1.4	1.1	



**Figure 7.** Live Births, Induced Terminations and Spontaneous Terminations of Pregnancy by Age of Woman  
New York City, 1996

There are almost 250,000 pregnancy outcomes reported in New York City annually. Over half are live births, about 40% are induced terminations and the remainder are spontaneous terminations, or fetal deaths. (The number of spontaneous and induced terminations reported depend on active surveillance.) For women under age 24, the outcome is about as likely to be an induced or spontaneous termination as a live birth. Women age 30-34 and 35-39 are about twice as likely to have a live birth as an induced or spontaneous termination.



**Figure 8.** Infant, Neonatal and Post-neonatal Mortality Rates  
New York City, 1983-1996

The New York City infant mortality rate has declined 45% since 1983. The largest drop, 13%, occurred from 1989 to 1990. About 55% of the infant deaths occur in the early neonatal period (under seven days of age), about 10% in the late neonatal period (7 to 27 days) and about one-third from 28 days through the remainder of the first year of life. Post-neonatal deaths have declined somewhat more than neonatal deaths.

Table 18.

**Live Births, Spontaneous and Induced Terminations of Pregnancy  
by Borough of Residence and Age of Woman  
New York City, 1996**

Borough of Residence/ Pregnancy Outcome	Total	Age of Woman								
		Under 15	15-17	18-19	20-24	25-29	30-34	35-39	40 & Over	Unknown & Not Stated
NEW YORK CITY	240,452	1,000	11,892	18,483	57,328	62,046	52,587	28,603	7,936	577
Live Births	126,901	315	4,735	7,970	26,745	33,829	32,289	16,965	4,021	32
Spontaneous Terminations	15,751	34	538	874	2,737	3,540	3,727	2,763	1,303	235
Induced Terminations	97,800	651	6,619	9,639	27,846	24,677	16,571	8,875	2,612	310
MANHATTAN	35,256	148	1,737	2,536	7,452	8,641	8,252	4,839	1,552	99
Live Births	19,745	47	768	1,125	3,433	4,718	5,482	3,204	964	4
Spontaneous Terminations	2,530	4	65	108	345	519	623	549	275	42
Induced Terminations	12,981	97	904	1,303	3,674	3,404	2,147	1,086	313	53
BRONX	45,374	272	2,917	4,427	12,421	11,796	8,403	4,085	959	94
Live Births	22,244	104	1,374	2,067	5,704	5,895	4,528	2,125	442	5
Spontaneous Terminations	3,177	12	155	229	704	745	686	431	173	42
Induced Terminations	19,953	156	1,388	2,131	6,013	5,156	3,189	1,529	344	47
BROOKLYN	81,167	323	4,101	6,485	21,209	20,918	16,386	8,855	2,681	209
Live Births	40,507	95	1,616	2,831	10,086	10,816	9,099	4,736	1,215	13
Spontaneous Terminations	5,700	13	215	374	1,075	1,314	1,279	896	438	96
Induced Terminations	34,960	215	2,270	3,280	10,048	8,788	6,008	3,223	1,028	100
QUEENS	53,923	176	2,418	3,823	12,545	14,767	12,139	6,343	1,590	122
Live Births	29,177	59	801	1,607	6,118	8,636	7,538	3,688	721	9
Spontaneous Terminations	3,017	3	75	141	504	697	750	564	247	36
Induced Terminations	21,729	114	1,542	2,075	5,923	5,434	3,851	2,091	622	77
RICHMOND	8,811	19	301	506	1,483	2,508	2,512	1,218	251	13
Live Births	5,823	7	128	219	765	1,812	1,915	846	130	1
Spontaneous Terminations	556	2	18	11	60	135	165	110	48	7
Induced Terminations	2,432	10	155	276	658	561	432	262	73	5
NON-RESIDENTS	15,684	62	402	684	2,175	3,354	4,852	3,237	889	29
Live Births	9,320	3	42	110	628	1,922	3,713	2,358	544	-
Spontaneous Terminations	761	-	10	11	48	127	223	213	122	7
Induced Terminations	5,603	59	350	563	1,499	1,305	916	666	223	22
RESIDENCE UNKNOWN	237	-	16	22	43	62	43	26	14	11
Live Births	85	-	6	11	11	30	14	8	5	-
Spontaneous Terminations	10	-	-	-	1	3	1	-	-	5
Induced Terminations	142	-	10	11	31	29	28	18	9	6

Table 19.

**Spontaneous Terminations of Pregnancy by Gestation and Age of Woman  
New York City, 1996**

Gestation in Weeks	Total	Age of Woman								
		Under 15	15-17	18-19	20-24	25-29	30-34	35-39	40 & Over	Not Stated
Total	15,751	34	538	874	2,737	3,540	3,727	2,763	1,303	235
Under 13	9,582	20	301	516	1,627	2,128	2,250	1,760	872	108
13-15	1,714	5	68	119	321	384	401	258	135	23
16-19	1,283	1	62	68	229	304	315	206	79	19
20-27	1,036	3	41	60	207	237	256	169	43	20
28 & Over	580	1	15	32	109	148	147	88	34	6
Not Stated	1,556	4	51	79	244	339	358	282	140	59

Table 20.

**Live Births, Spontaneous Terminations of 28 Weeks Gestation and Over and Induced Terminations of  
Pregnancy by Boroughs of Residence and Occurrence  
New York City, 1996**

Borough of Residence/ Pregnancy Outcome	Total	Borough of Occurrence				
		Manhattan	Bronx	Brooklyn	Queens	Richmond
<b>NEW YORK CITY</b> .....	225,281	82,825	28,823	55,094	51,840	6,699
Live Births .....	126,901	40,570	19,556	34,306	26,227	6,242
Spontaneous Terminations .....	580	151	108	196	100	25
Induced Terminations .....	97,800	42,104	9,159	20,592	25,513	432
<b>MANHATTAN</b> .....	32,809	30,623	1,159	421	593	13
Live Births .....	19,745	18,880	579	153	121	12
Spontaneous Terminations .....	83	79	3	–	1	–
Induced Terminations .....	12,981	11,664	577	268	471	1
<b>BRONX</b> .....	42,308	15,252	25,812	408	820	16
Live Births .....	22,244	4,115	17,821	139	157	12
Spontaneous Terminations .....	111	12	98	–	–	1
Induced Terminations .....	19,953	11,125	7,893	269	663	3
<b>BROOKLYN</b> .....	75,687	18,471	207	49,767	6,639	603
Live Births .....	40,507	6,962	90	31,674	1,217	564
Spontaneous Terminations .....	220	22	1	188	6	3
Induced Terminations .....	34,960	11,487	116	17,905	5,416	36
<b>QUEENS</b> .....	51,016	9,103	310	2,653	38,899	51
Live Births .....	29,177	5,218	186	1,568	22,154	51
Spontaneous Terminations .....	110	20	3	1	86	–
Induced Terminations .....	21,729	3,865	121	1,084	16,659	–
<b>RICHMOND</b> .....	8,277	1,438	16	1,035	120	5,668
Live Births .....	5,823	191	7	323	25	5,277
Spontaneous Terminations .....	22	1	–	–	–	21
Induced Terminations .....	2,432	1,246	9	712	95	370
<b>NON-RESIDENTS</b> .....	14,957	7,828	1,277	776	4,735	341
Live Births .....	9,320	5,178	856	429	2,538	319
Spontaneous Terminations .....	34	17	3	7	7	–
Induced Terminations .....	5,603	2,633	418	340	2,190	22
<b>RESIDENCE UNKNOWN</b> .....	227	110	42	34	34	7
Live Births .....	85	26	17	20	15	7
Spontaneous Terminations .....	0	–	–	–	–	–
Induced Terminations .....	142	84	25	14	19	–

Table 21.

**Live Births by Ancestry of Mother and Borough of Residence  
New York City, 1996**

Ancestry of Mother	Total	Borough of Residence						Non-Residents	Residence Unknown
		Manhattan	Bronx	Brooklyn	Queens	Richmond			
<b>Total</b> .....	126,901	19,745	22,244	40,507	29,177	5,823	9,320	85	
Puerto Rican .....	12,925	1,563	5,534	3,569	1,551	380	318	10	
Dominican .....	11,611	3,896	3,837	1,874	1,826	27	136	15	
Colombian .....	1,606	73	61	144	1,262	15	51	–	
Ecuadorian .....	2,782	275	300	616	1,516	32	41	2	
Mexican .....	5,150	727	841	1,738	1,629	182	27	6	
Cuban .....	344	73	59	55	83	21	53	–	
Other Hispanic .....	6,621	750	1,447	1,806	2,250	139	227	2	
African-American .....	21,337	2,825	5,056	8,546	3,718	649	524	19	
American .....	8,490	1,406	387	3,519	1,083	998	1,093	4	
Guyanese .....	2,541	38	320	929	1,208	6	39	1	
Haitian .....	2,308	81	44	1,511	576	5	90	1	
Jamaican .....	3,493	99	733	1,568	940	24	126	3	
Trinidadian .....	1,467	50	78	878	425	14	22	–	
Other North, Central and South American .....	2,887	314	528	1,454	421	32	136	2	
English .....	700	293	25	133	51	30	168	–	
German .....	1,866	497	80	262	349	175	503	–	
Irish .....	3,598	624	268	579	736	474	916	1	
Italian .....	6,032	481	423	1,278	1,025	1,588	1,237	–	
Polish .....	1,385	222	26	520	323	65	228	1	
Russian .....	2,275	473	41	921	432	44	362	2	
Other European .....	4,194	1,083	329	994	874	226	685	3	
Chinese .....	4,536	1,234	66	1,622	1,292	56	265	1	
Asian Indian .....	1,772	136	94	185	1,124	78	155	–	
Korean .....	1,057	113	47	71	703	30	93	–	
Filipino .....	1,087	133	124	140	464	56	169	1	
Other Asian .....	5,506	681	360	1,955	2,012	147	347	4	
Other and Not Stated .....	9,331	1,605	1,136	3,640	1,304	330	1,309	7	

**Figure 9. Marriages, Births, Deaths and Average Per Day by Month  
New York City, 1996**

MONTHS	NUMBER			AVERAGE PER DAY		
	MARRIAGES	BIRTHS	DEATHS	MARRIAGES	BIRTHS	DEATHS
January	4,471	10,728	6,469	144	346	209
February	5,241	9,976	5,615	187	356	201
March	5,764	10,449	5,647	186	337	182
April	6,970	10,186	5,310	232	340	177
May	7,308	10,533	5,586	236	340	180
June	6,880	10,669	5,108	229	356	170
July	7,385	11,138	5,205	238	359	168
August	8,062	11,049	5,145	260	356	166
September	7,084	10,651	4,940	236	355	165
October	7,510	10,998	5,422	242	355	175
November	6,100	10,037	5,664	203	335	189
December	6,586	10,487	6,673	212	338	215
Total	79,361	126,901	66,784	217	348	183

**Figure 10a. Most Popular Baby Names by Sex  
New York City, Selected Years**

Rank	GIRLS											
	1898	1928	1948	1980	1985	1990	1991	1992	1993	1994	1995	1996
1	Mary	Mary	Linda	Jennifer	Jennifer	Stephanie	Stephanie	Ashley	Ashley	Ashley	Ashley	Ashley
2	Catherine	Marie	Mary	Jessica	Jessica	Jessica	Ashley	Stephanie	Stephanie	Jessica	Jessica	Jessica
3	Margaret	Annie	Barbara	Melissa	Christina	Ashley	Jessica	Jessica	Jessica	Stephanie	Amanda	Samantha
4	Annie	Margaret	Patricia	Nicole	Stephanie	Jennifer	Amanda	Amanda	Amanda	Samantha	Samantha	Stephanie
5	Rose	Catherine	Susan	Michelle	Melissa	Amanda	Samantha	Samantha	Amanda	Amanda	Stephanie	Nicole
6	Marie	Gloria	Kathleen	Elizabeth	Nicole	Samantha	Jennifer	Jennifer	Nicole	Nicole	Jennifer	Amanda
7	Esther	Helen	Carol	Lisa	Elizabeth	Nicole	Nicole	Nicole	Jennifer	Jennifer	Nicole	Jennifer
8	Sarah	Teresa	Nancy	Christina	Amanda	Christina	Michelle	Michelle	Michelle	Michelle	Sarah	Sarah
9	Frances	Joan	Margaret	Tiffany	Danielle	Melissa	Melissa	Melissa	Melissa	Tiffany	Michelle	Michelle
10	Ida	Barbara	Diane	Maria	Lauren	Michelle	Christina	Christina	Christina	Danielle	Emily	Emily

Rank	BOYS											
	1898	1928	1948	1980	1985	1990	1991	1992	1993	1994	1995	1996
1	John	John	Robert	Michael	Michael	Michael	Michael	Michael	Michael	Michael	Michael	Michael
2	William	William	John	David	Christopher	Christopher	Christopher	Christopher	Christopher	Christopher	Christopher	Christopher
3	Charles	Joseph	James	Jason	Daniel	Jonathan	Jonathan	Jonathan	Kevin	Kevin	Kevin	Anthony
4	George	James	Michael	Joseph	David	Anthony	Anthony	Anthony	Jonathan	Anthony	Daniel	Kevin
5	Joseph	Richard	William	Christopher	Anthony	David	Joseph	Joseph	Anthony	Jonathan	Jonathan	Daniel
6	Edward	Edward	Richard	Anthony	Joseph	Daniel	Daniel	Daniel	Daniel	Daniel	Joseph	Joseph
7	James	Robert	Joseph	John	Jonathan	Joseph	David	David	Joseph	Joseph	Anthony	Matthew
8	Louis	Thomas	Thomas	Daniel	Jason	Matthew	Matthew	Kevin	David	Matthew	Matthew	Justin
9	Francis	George	Stephen	Robert	John	John	Kevin	Matthew	Matthew	David	David	Jonathan
10	Samuel	Louis	David	James	Robert	Andrew	John	John	John	Brandon	Justin	David

**Figure 10b. Most Popular Baby Names by Sex and Mother's Ethnicity  
New York City, 1996**

Rank	GIRLS				BOYS			
	HISPANIC	BLACK	WHITE	ASIAN	HISPANIC	BLACK	WHITE	ASIAN
1	Ashley	Ashley	Rachel	Michelle	Christopher	Malik	Michael	Kevin
2	Stephanie	Brianna	Nicole*	Tiffany	Kevin	Michael	Joseph	Jason
3	Jennifer	Imani	Samantha*	Jessica	Jonathan	Brandon	Matthew	David
4	Kimberly	Destiny	Sarah	Jenny	Christian*	Christopher	Daniel	Andrew
5	Samantha	Jasmine	Amanda	Amy	Jose*	Justin	Nicholas	Daniel
6	Jessica	Kayla	Jessica	Jennifer	Anthony	Joshua	Christopher	Michael
7	Michelle	Tiffany	Emily	Ashley	Brandon	Anthony	John	Brian
8	Amanda	Alexis*	Victoria	Stephanie	Justin	Isaiah	Anthony	Brandon
9	Nicole	Danielle*	Alexandra	Cindy*	Joshua	Elijah	David	Jonathan
10	Maria	Briana	Julia	Emily*	Michael	David	James	Justin

Note: Persons of Hispanic ethnicity may be of any race. Other and Unknown ethnicities not shown.

\* Tied ranks.

Table 22.

**Selected Characteristics of Live Births and Spontaneous Terminations of Pregnancy  
28 Weeks Gestation and Over by Age of Mother  
New York City, 1996**

	Total	Age of Mother								Not Stated
		Under 15	15-17	18-19	20-24	25-29	30-34	35-39	40 & Over	
Total Live Births	126,901	315	4,735	7,970	26,745	33,829	32,289	16,965	4,021	32
Sex										
Male	64,935	151	2,500	4,053	13,664	17,240	16,516	8,746	2,046	19
Female	61,966	164	2,235	3,917	13,081	16,589	15,773	8,219	1,975	13
Birth Order This Child (Live Births Only)										
First	55,515	305	4,174	5,966	14,262	13,786	11,006	4,834	1,159	23
Second	38,230	10	511	1,646	8,272	10,873	10,612	5,212	1,089	5
Third	18,819	-	48	296	2,999	5,448	5,921	3,398	706	3
Fourth	7,430	-	1	55	867	2,199	2,379	1,582	347	-
Fifth	3,175	-	-	6	253	898	1,105	720	192	1
Sixth or higher	3,732	-	1	1	92	625	1,266	1,219	528	-
Weight at Delivery in Grams										
Under 500	183	-	9	11	38	49	35	29	12	-
500-999	931	5	35	58	166	222	250	161	34	-
1000-1499	1,086	6	49	74	153	247	295	213	49	-
1500-1999	2,145	7	84	141	410	543	534	322	104	-
2000-2499	6,611	26	303	456	1,334	1,603	1,621	981	284	3
2500-2999	23,758	79	1,165	1,819	5,361	6,044	5,594	2,967	726	3
3000-3499	49,116	117	2,053	3,334	10,887	13,153	12,018	6,174	1,366	14
3500-3999	32,761	64	866	1,691	6,612	9,174	8,856	4,455	1,035	8
4000-4499	8,743	11	157	347	1,533	2,392	2,578	1,380	344	1
4500-4999	1,381	-	12	35	225	358	445	249	56	1
5000 & over	145	-	-	3	19	37	47	30	9	-
Not stated	41	-	2	1	7	7	16	4	2	2
Plurality										
Single	123,141	314	4,660	7,851	26,194	32,871	31,194	16,219	3,807	31
Twin	3,505	1	72	112	536	904	1,012	668	199	1
Triplet	234	-	3	3	15	50	79	69	15	-
Quadruplet	16	-	-	4	-	4	4	4	-	-
Quintuplet	5	-	-	-	-	-	-	5	-	-
Apgar Score at 5 Minutes										
6 or less	6,424	29	290	398	1,305	1,565	1,614	977	245	1
7	5,933	17	274	413	1,243	1,531	1,402	846	207	-
8	21,032	47	906	1,442	4,656	5,462	5,031	2,789	696	3
9	92,550	214	3,220	5,658	19,347	25,021	24,005	12,221	2,839	25
10	328	4	11	14	71	77	91	44	15	1
Not stated	634	4	34	45	123	173	146	88	19	2
Place of Birth										
Home	750	5	39	40	146	194	188	115	23	-
Hospital										
Voluntary, Private Service	56,453	30	612	1,187	7,043	15,202	18,938	10,801	2,629	11
Voluntary, General Service	43,259	161	2,566	4,292	12,306	11,369	8,139	3,631	780	15
Municipal	25,534	116	1,478	2,389	7,056	6,826	4,797	2,310	558	4
Maternity Center	356	2	21	26	91	91	79	37	9	-
Other	549	1	19	36	103	147	148	71	22	2
Attendant										
Physician	110,903	237	3,689	6,321	22,080	29,794	29,443	15,584	3,726	29
Certified Nurse Midwife	15,198	74	1,000	1,572	4,446	3,843	2,701	1,292	269	1
Other	800	4	46	77	219	192	145	89	26	2
Financial Coverage										
Self	5,834	14	255	347	1,281	1,633	1,344	750	209	1
Medicaid	66,255	266	3,873	6,472	18,998	17,433	12,286	5,596	1,314	17
Third Party	38,624	20	322	629	3,968	10,194	13,657	7,947	1,880	7
HMO	13,735	9	213	388	1,971	3,890	4,382	2,330	548	4
Not stated	2,453	6	72	134	527	679	620	342	70	3
First Visit for Prenatal Care										
Early (1-6 months)	100,292	169	3,312	5,854	20,433	27,169	26,343	13,810	3,180	22
Late (7-9 months)	7,447	59	553	727	2,029	1,867	1,332	685	194	1
No Care	3,652	21	217	359	851	907	778	412	107	-
Not stated	15,510	66	653	1,030	3,432	3,886	3,836	2,058	540	9
Marital Status of Mother										
Married	60,033	7	210	987	8,795	17,745	19,694	10,306	2,282	7
Not Married	66,868	308	4,525	6,983	17,950	16,084	12,595	6,659	1,739	25
Years of Education										
None	274	-	5	26	80	65	58	26	14	-
1-8	8,674	183	567	633	2,294	2,282	1,623	832	259	1
9-12	67,135	119	4,036	6,442	17,301	17,477	13,684	6,616	1,446	14
13 & over	48,099	-	20	665	6,415	13,304	16,312	9,160	2,215	8
Not stated	2,719	13	107	204	655	701	612	331	87	9
Birthplace of Mother										
United States other than Puerto Rico	61,367	236	3,125	4,770	12,900	15,012	14,927	8,368	2,016	13
Puerto Rico	3,691	14	262	371	952	853	764	373	102	-
Foreign	60,595	54	1,283	2,742	12,587	17,646	16,343	8,058	1,867	15
Not stated	1,248	11	65	87	306	318	255	166	36	4
Spontaneous Terminations of Pregnancy, 28 weeks & Over										
Total	580	1	15	32	109	148	147	88	34	6
Sex										
Male	249	-	5	11	51	62	66	41	13	-
Female	220	1	7	18	40	59	54	28	10	3
Undetermined	111	-	3	3	18	27	27	19	11	3
Weight at Delivery in Grams										
Under 500	32	-	3	5	5	9	4	6	-	-
500-999	57	1	2	4	8	15	15	10	1	1
1000-1499	50	-	3	5	5	14	12	6	5	-
1500-1999	67	-	-	4	14	11	25	10	3	-
2000-2499	75	-	1	2	11	21	22	9	8	1
2500 & over	178	-	3	9	49	46	41	25	5	-
Not stated	121	-	3	3	17	32	28	22	12	4

Table 23.

**Selected Characteristics of Live Births and Spontaneous Terminations of Pregnancy  
28 Weeks Gestation and Over by Mother's Ethnic Group  
New York City, 1996**

	Total	Ethnic Group of Mother						Not Stated
		Puerto Rican	Other Hispanic	Asian	Other White	Other Black	Other	
Total live Births	126,901	12,925	28,114	12,782	37,215	34,798	605	462
Sex								
Male	64,935	6,557	14,320	6,672	19,120	17,732	315	219
Female	61,966	6,368	13,794	6,110	18,095	17,066	290	243
Birth Order This Child (Live Births Only)								
First	55,515	5,307	11,910	6,114	17,536	14,117	284	247
Second	38,230	3,737	8,690	4,664	11,055	9,763	216	105
Third	18,819	2,118	4,786	1,493	4,711	5,595	64	52
Fourth	7,430	936	1,720	372	1,693	2,653	30	26
Fifth	3,175	417	581	91	785	1,277	7	17
Sixth or Higher	3,732	410	427	48	1,435	1,393	4	15
Weight at Delivery in Grams								
Under 500	183	9	20	9	32	109	1	3
500-999	931	111	154	43	160	451	4	8
1000-1499	1,086	122	173	61	240	479	8	3
1500-1999	2,145	264	338	152	535	831	13	12
2000-2499	6,611	834	1,158	612	1,555	2,364	48	40
2500-2999	23,758	2,705	4,706	2,770	5,881	7,456	154	86
3000-3499	49,116	4,901	11,190	5,505	14,150	12,934	263	173
3500-3999	32,761	3,055	7,881	2,879	10,988	7,776	88	94
4000-4499	8,743	797	2,140	665	3,086	1,999	22	34
4500-4999	1,381	114	316	73	529	341	4	4
5000 & over	145	12	26	11	48	47	-	1
Not stated	41	1	12	2	11	11	-	4
Plurality								
Single	123,141	12,579	27,615	12,570	35,560	33,770	601	446
Twin	3,505	337	481	204	1,468	995	4	16
Triplet	234	9	18	-	174	33	-	-
Quadruplet	16	-	-	8	8	-	-	-
Quintuplet	5	-	-	-	5	-	-	-
Apgar Score at 5 Minutes								
6 or less	6,424	746	1,433	416	1,223	2,550	24	32
7	5,933	730	1,471	403	1,314	1,972	16	27
8	21,032	2,491	5,173	1,554	5,303	6,346	90	75
9	92,550	8,856	19,856	10,356	29,165	23,531	471	315
10	328	47	64	30	119	62	2	4
Not stated	634	55	117	23	91	337	2	9
Place of Birth								
Home	750	73	100	28	158	370	2	19
Hospital								
Voluntary, Private Service	56,453	3,687	4,712	6,056	29,687	12,005	149	157
Voluntary, General Service	43,259	5,343	13,537	4,166	5,543	14,216	234	220
Municipal	25,534	3,700	9,585	2,473	1,608	7,907	218	43
Maternity Center	356	77	76	19	95	85	1	3
Other	549	45	104	40	124	215	1	20
Attendant								
Physician	110,903	10,294	23,474	11,809	34,402	29,954	567	403
Certified Nurse Midwife	15,198	2,562	4,431	922	2,698	4,502	32	51
Other	800	69	209	51	115	342	6	8
Financial Coverage								
Self	5,834	362	1,258	731	1,984	1,452	25	22
Medicaid	66,255	8,785	21,937	6,093	8,023	20,751	419	247
Third Party	38,624	2,626	3,029	3,975	21,573	7,230	108	83
HMO	13,735	1,072	1,564	1,646	5,325	4,019	48	61
Not stated	2,453	80	326	337	310	1,346	5	49
First Visit for Prenatal Care								
Early (1-6 months)	100,292	10,437	21,094	10,432	31,332	26,202	505	290
Late (7-9 months)	7,447	810	2,152	770	1,208	2,442	34	31
No Care	3,652	418	824	312	465	1,593	18	22
Not stated	15,510	1,260	4,044	1,268	4,210	4,561	48	119
Marital Status of Mother								
Married	60,033	3,367	9,760	8,664	28,406	9,382	345	109
Not Married	66,868	9,558	18,354	4,118	8,809	25,416	260	353
Years of Education								
None	274	3	100	28	28	106	4	5
1-8	8,674	685	5,219	1,107	593	998	69	3
9-12	67,135	8,765	15,867	6,199	14,944	20,729	400	231
13 & over	48,099	3,278	6,325	5,296	20,830	12,189	125	56
Not stated	2,719	194	603	152	820	776	7	167
Birthplace of Mother								
United States other than Puerto Rico	61,367	9,265	3,835	466	27,487	20,009	70	235
Puerto Rico	3,691	3,511	141	1	23	15	-	-
Foreign	60,595	99	23,985	12,265	9,385	14,233	528	100
Not stated	1,248	50	153	50	320	541	7	127
Spontaneous Terminations of Pregnancy, 28 weeks & Over								
Total	580	53	116	39	125	230	1	16
Sex								
Male	249	27	50	15	46	105	-	6
Female	220	15	41	18	56	87	1	2
Undetermined	111	11	25	6	23	38	-	8
Weight at Delivery in Grams								
Under 500	32	3	1	3	7	16	-	2
500-999	57	3	12	3	11	26	-	2
1000-1499	50	3	10	3	11	22	-	1
1500-1999	67	7	9	6	10	35	-	-
2000-2499	75	7	16	3	16	29	1	3
2500 & over	178	17	45	13	38	64	-	1
Not stated	121	13	23	8	32	38	-	7

Table 24.

Live Births by Selected Characteristics and Infant Deaths  
by Health Center District of Residence, New York City, 1996

Health Center District	Live Births	Rate*	Percent of Total Live Births with Specified Characteristics								Infant Mortality (Under 1 Year)		Neonatal Mortality (Under 28 Days)	
			Mother's Ancestry Hispanic		Foreign Born Mother	First Live Birth	Under 2,500 Grams	Late or No Prenatal Care	Mother Not Married	On Medicaid	Number	Rate**	Number	Rate**
			Puerto Rican	Other Hispanic										
NEW YORK CITY	126,901	17.3	10.2	22.2	47.7	43.7	8.6	8.7	52.7	52.2	992	7.8	656	5.2
MANHATTAN	19,745	13.3	7.9	29.3	45.6	52.8	9.1	8.8	56.2	52.9	138	7.0	95	4.8
Central Harlem	2,044	17.7	7.7	12.9	26.7	39.6	13.1	14.6	82.5	75.0	31	15.2	23	11.3
East Harlem	2,115	16.6	21.0	29.3	34.8	47.1	11.7	10.9	70.1	66.7	24	11.3	14	6.6
Kips Bay-Yorkville	2,629	11.2	1.3	5.7	32.4	67.7	7.9	3.3	26.7	6.8	11	4.2	9	3.4
Lower East Side	2,658	11.1	12.1	11.2	51.7	51.6	7.6	5.6	46.3	56.9	17	6.4	14	5.3
Lower West Side	2,707	9.2	5.1	10.0	40.6	62.7	7.9	6.2	41.0	24.6	15	5.5	9	3.3
Riverside	2,374	11.4	7.1	18.8	31.2	56.0	9.6	7.8	56.0	35.3	12	5.1	9	3.8
Washington Heights	5,213	19.6	5.7	71.9	70.0	46.6	8.1	12.0	68.1	82.5	28	5.4	17	3.3
BRONX	22,244	18.5	24.9	29.4	43.3	38.0	9.7	10.6	70.5	71.3	207	9.3	119	5.3
Fordham-Riverdale	4,382	17.9	23.5	35.5	50.5	41.4	8.7	10.5	65.1	69.8	24	5.5	12	2.7
Morrisania	3,445	23.8	25.3	31.0	39.7	36.3	10.1	10.6	78.6	80.3	34	9.9	16	4.6
Mott Haven	2,479	19.1	37.9	31.4	31.4	37.7	11.0	12.0	79.5	83.1	27	10.9	16	6.5
Pelham Bay	2,906	13.3	13.4	12.0	51.2	38.0	9.4	10.8	63.8	57.4	34	11.7	20	6.9
Tremont	4,756	25.0	24.2	39.3	48.4	35.8	10.1	10.3	78.3	81.0	49	10.3	29	6.1
Westchester	4,267	15.5	27.0	21.6	34.6	38.4	9.7	10.2	60.3	57.2	39	9.1	26	6.1
BROOKLYN	40,507	17.6	8.8	15.4	47.6	41.6	8.8	10.2	54.7	54.2	329	8.1	230	5.7
Bay Ridge	3,716	15.6	5.5	13.6	54.8	45.0	6.3	6.6	29.8	42.1	20	5.4	12	3.2
Bedford	4,089	17.6	2.9	5.8	42.7	39.7	10.8	11.6	73.6	61.1	47	11.5	28	6.8
Brownsville	5,211	18.7	9.1	8.8	42.8	38.2	11.6	13.9	71.7	58.4	45	8.6	29	5.6
Bushwick	4,028	22.1	24.4	36.4	46.0	37.9	9.4	11.0	75.1	74.3	43	10.7	26	6.5
Flatbush	8,550	17.0	2.8	9.0	59.0	42.1	9.0	9.6	49.4	44.9	85	9.9	62	7.3
Fort Greene	2,422	16.1	9.5	13.2	28.9	43.2	12.0	9.8	74.3	59.6	27	11.1	20	8.3
Gravesend	3,756	13.2	6.0	9.9	52.1	48.8	7.8	16.8	41.1	45.8	17	4.5	14	3.7
Red Hook-Gowanus	1,545	14.6	14.8	16.1	29.7	51.5	7.7	5.7	56.5	40.4	10	6.5	9	5.8
Sunset Park	4,031	23.7	11.5	26.5	50.8	38.9	6.1	5.0	39.2	56.7	21	5.2	20	5.0
Williamsburg-Greenpoint	3,149	20.2	12.7	24.9	38.0	37.9	6.3	7.7	40.4	62.0	14	4.4	10	3.2
QUEENS	29,177	15.0	5.3	29.4	65.1	45.2	7.7	8.4	49.7	54.3	190	6.5	129	4.4
Astoria-Long Island City	3,866	16.4	4.8	38.9	73.7	50.1	6.7	10.3	49.4	60.2	20	5.2	11	2.8
Corona	6,088	20.9	2.5	59.6	83.4	44.6	6.4	12.0	58.3	65.3	26	4.3	17	2.8
Flushing	4,759	10.4	3.5	17.6	64.8	46.5	6.6	5.9	32.1	39.2	28	5.9	20	4.2
Jamaica East	4,948	14.7	2.9	10.1	53.7	42.8	10.2	7.1	61.0	56.9	61	12.3	41	8.3
Jamaica West	5,936	16.4	9.2	22.9	56.2	41.6	9.2	7.5	53.4	57.6	41	6.9	32	5.4
Maspeth-Forest Hills	3,558	13.2	9.8	20.6	55.8	48.0	6.5	6.5	36.8	40.0	14	3.9	8	2.2
RICHMOND	5,823	15.4	6.5	7.1	21.7	42.3	7.5	3.8	28.4	24.2	32	5.5	20	3.4
NON-RESIDENTS	9,320	-	3.4	5.7	25.6	44.1	7.8	2.2	18.2	7.3	94	10.1	61	6.5
RESIDENCE UNKNOWN	85	-	11.8	29.4	52.9	45.9	10.6	11.8	77.6	65.9	2	-	2	-

\*Rate per 1,000 population.  
\*\*Rate per 1,000 live births.

Table 25.

Live Births by Selected Characteristics and Mother's Ancestry  
New York City, 1996

Ancestry of Mother	Live Births	Percent of Live Births with Specified Characteristics							Teenage Mother
		Foreign Born Mother	First Live Birth	Under 2,500 Grams	Late or No Prenatal Care	Mother Not Married	On Medicaid		
Total	126,901	47.7	43.7	8.6	8.7	52.7	52.2	10.3	
Puerto Rican	12,925	0.8	41.1	10.4	9.5	73.9	68.0	22.4	
Dominican	11,611	89.1	42.0	6.9	10.3	66.8	83.1	12.5	
Colombian	1,606	91.8	43.5	6.2	7.5	56.9	65.6	7.8	
Ecuadorian	2,782	92.7	41.9	5.5	10.8	52.8	75.9	7.9	
Mexican	5,150	97.0	43.8	5.8	14.0	76.2	89.1	17.1	
Cuban	344	41.6	48.5	9.9	4.1	42.7	34.0	7.0	
Other Hispanic	6,621	67.3	41.5	6.8	9.4	62.6	66.8	12.8	
African-American	21,337	8.1	41.1	13.6	12.1	80.0	59.9	18.5	
American	8,490	2.2	44.9	8.1	4.9	29.0	26.1	6.2	
Guyanese	2,541	98.3	42.3	12.8	7.9	46.0	53.7	7.5	
Haitian	2,308	94.7	40.6	9.7	10.3	49.1	54.9	5.2	
Jamaican	3,493	97.5	38.7	9.7	9.8	69.5	59.8	8.5	
Trinidadian	1,467	96.9	42.9	9.9	10.8	60.7	58.8	8.4	
Other North, Central and South American	2,887	91.8	42.8	8.5	11.2	60.3	55.1	7.7	
English	700	29.3	59.3	6.0	3.1	29.0	6.9	0.7	
German	1,866	11.1	53.1	6.1	3.7	25.3	9.7	1.4	
Irish	3,598	10.6	48.5	5.5	2.8	21.8	11.6	1.9	
Italian	6,032	9.1	47.8	6.8	2.6	17.8	10.7	2.8	
Polish	1,385	49.7	50.2	7.1	6.0	27.5	35.7	1.9	
Russian	2,275	58.2	50.8	7.3	6.2	35.1	26.1	2.4	
Other European	4,194	51.6	51.8	6.5	6.8	24.7	24.1	2.8	
Chinese	4,536	94.4	50.4	4.5	4.7	29.5	51.2	0.9	
Asian Indian	1,772	96.8	46.9	9.3	8.8	37.4	41.4	1.7	
Korean	1,057	97.5	50.0	5.5	7.9	23.1	40.5	0.8	
Filipino	1,087	95.5	47.0	7.8	5.2	21.8	16.8	1.8	
Other Asian	5,506	93.8	44.0	7.0	10.9	31.2	52.5	4.0	
Other & Not Stated	9,331	39.5	41.2	7.5	7.3	33.3	36.7	4.0	



Table 26.

Live Births to Teenagers by Selected Characteristics and Infant Deaths by Health Center District of Residence, New York City, 1996

Health Center District	Live Births to Teenagers	Percent of Total Live Births	Percent of Teenage Live Births with Specified Characteristics								Infant Mortality (Under 1 Year)		Neonatal Mortality (Under 28 Days)	
			Mother's Ancestry		Foreign Born Mother	First Live Birth	Under 2,500 Grams	Late or No Prenatal Care	Mother Not Married	On Medicaid	Number	Rate*	Number	Rate*
			Puerto Rican	Other Hispanic										
NEW YORK CITY	13,020	10.3	22.3	27.2	31.3	80.2	9.7	14.9	90.8	81.5	122	9.4	75	5.8
MANHATTAN	1,940	9.8	18.1	40.6	32.1	82.0	9.8	15.8	92.5	89.2	14	7.2	7	3.6
Central Harlem	340	16.6	9.1	13.2	14.7	77.9	9.7	16.2	97.6	87.4	4	11.8	3	8.8
East Harlem	341	16.1	33.7	36.4	25.8	81.5	11.1	15.5	92.7	89.1	3	8.8	2	5.9
Kips Bay-Yorkville	55	2.1	10.9	20.0	25.5	90.9	14.5	16.4	94.5	87.3	-	-	-	-
Lower East Side	220	8.3	35.9	17.7	16.8	85.5	10.0	10.9	90.9	89.1	-	-	-	-
Lower West Side	119	4.4	24.4	17.6	29.4	83.2	8.4	17.6	87.4	81.5	3	25.2	1	8.4
Riverside	175	7.4	21.7	35.4	26.9	79.4	12.6	20.0	96.0	85.7	-	-	-	-
Washington Heights	689	13.2	7.8	70.4	50.8	82.9	8.3	16.0	90.3	92.6	4	5.8	1	1.5
BRONX	3,545	15.9	37.8	26.3	26.7	75.4	10.0	14.0	93.1	86.9	39	11.0	21	5.9
Fordham-Riverdale	576	13.1	37.3	35.9	34.5	75.9	7.6	13.7	91.8	88.2	3	5.2	1	1.7
Morrisania	635	18.4	38.3	24.3	23.3	76.1	10.6	11.8	93.9	86.9	10	15.7	5	7.9
Mott Haven	548	22.1	47.8	24.8	21.4	76.3	11.7	13.5	92.3	91.6	5	9.1	3	5.5
Pelham Bay	380	13.1	18.4	15.5	34.7	72.1	12.1	16.8	92.9	81.6	6	15.8	5	13.2
Tremont	867	18.2	38.4	29.6	28.1	74.9	9.0	13.8	93.9	88.4	10	11.5	4	4.6
Westchester	538	12.6	40.3	22.1	20.1	76.6	10.6	15.6	93.1	82.2	5	9.3	3	5.6
BROOKLYN	4,542	11.2	18.7	19.7	29.7	80.7	9.9	15.6	90.1	78.4	44	9.7	29	6.4
Bay Ridge	184	5.0	15.2	31.5	46.7	82.6	5.4	9.8	67.9	77.2	1	5.4	1	5.4
Bedford	597	14.6	4.5	4.9	25.0	81.1	10.2	16.9	97.0	80.6	6	10.1	5	8.4
Brownsville	839	16.1	15.3	8.8	20.4	78.9	11.7	18.4	95.1	75.6	7	8.3	3	3.6
Bushwick	680	16.9	36.3	29.4	26.9	76.6	9.7	12.1	95.1	85.3	11	16.2	8	11.8
Flatbush	689	8.1	8.0	13.8	45.6	84.9	8.6	17.0	90.0	69.8	10	14.5	8	11.6
Fort Greene	363	15.0	16.5	15.2	15.4	78.0	11.6	14.3	95.9	81.8	5	13.8	1	2.8
Gravesend	327	8.7	16.8	19.3	30.6	79.5	12.5	33.3	83.5	74.3	1	3.1	-	-
Red Hook-Gowanus	172	11.1	33.7	22.7	20.3	83.7	8.1	9.9	93.0	78.5	1	5.8	1	5.8
Sunset Park	377	9.4	26.5	42.7	41.1	82.2	8.5	5.8	76.4	83.6	2	5.3	2	5.3
Williamsburg-Greenpoint	314	10.0	28.7	37.9	31.2	83.8	8.0	11.5	80.9	79.9	-	-	-	-
QUEENS	2,467	8.5	10.7	34.9	43.1	83.9	9.3	14.9	88.5	77.5	20	8.1	14	5.7
Astoria-Long Island City	258	6.7	13.2	52.3	47.7	88.8	8.9	15.1	86.4	81.0	2	7.8	-	-
Corona	541	8.9	4.1	73.8	64.9	85.4	7.6	20.9	87.2	73.2	-	-	-	-
Flushing	204	4.3	9.8	37.3	52.0	84.8	8.8	12.7	76.0	72.1	2	9.8	2	9.8
Jamaica East	619	12.5	5.3	8.4	27.9	82.7	10.2	12.1	94.7	75.9	11	17.8	8	12.9
Jamaica West	645	10.9	16.3	22.3	34.7	82.2	10.7	12.9	90.7	81.9	5	7.8	4	6.2
Maspeth-Forest Hills	198	5.6	25.3	27.3	42.9	81.8	7.6	15.7	81.8	80.8	-	-	-	-
RICHMOND	354	6.1	18.1	13.6	17.8	82.5	8.5	9.0	89.3	65.0	2	5.6	1	2.8
NON-RESIDENTS	155	1.7	16.8	9.7	17.4	89.7	5.8	15.5	73.5	54.8	3	19.4	3	19.4
RESIDENCE UNKNOWN	17	20.0	23.5	41.2	47.1	88.2	5.9	11.8	88.2	82.4	-	-	-	-

\*Rate per 1,000 live births to teenagers.

Table 27.

Live Births to Teenagers by Selected Characteristics, New York City, 1983-1996

	1983	1984	1985	1986	1987	1988	1989	1990	1991	1992	1993	1994	1995	1996
Total Live Births	112,353	113,332	118,542	122,108	127,386	132,226	137,673	139,630	138,148	136,002	133,583	133,662	131,009	126,901
Percent to Teenagers	12.4	11.8	11.2	10.8	10.3	10.4	10.3	10.1	10.1	10.1	10.4	10.6	10.5	10.3
Births to Teenagers	13,892	13,339	13,304	13,168	13,166	13,714	14,121	14,131	13,999	13,795	13,848	14,156	13,713	13,020
Percent of Births with Specified Characteristics:														
Puerto Rican	30.1	29.4	28.6	29.4	29.1	28.6	27.4	27.5	27.0	25.9	25.6	23.4	22.2	22.3
Other Hispanic	9.1	9.5	10.3	10.8	12.9	12.6	15.3	17.2	19.1	20.8	21.6	23.8	28.2	27.2
Foreign Born Mother	16.4	16.5	16.8	17.8	18.6	19.6	21.2	24.6	26.0	26.9	27.9	28.6	30.8	31.3
First Live Birth	80.2	80.2	80.1	79.8	80.3	79.5	79.8	78.7	77.4	78.2	77.9	77.5	78.2	80.2
Under 2,500 Grams	11.3	11.3	11.2	11.7	11.4	11.7	11.4	10.9	11.5	10.4	11.1	10.7	10.6	9.7
Prenatal Care in First 6 Months of Pregnancy	60.3	59.7	59.7	56.2	58.0	65.8	61.8	60.2	64.0	65.6	66.1	69.5	71.3	71.7
Not Married	80.0	81.4	81.7	82.7	82.1	80.2	82.0	82.4	83.1	84.2	88.1	89.8	89.3	90.8
On Medicaid	62.6	65.7	66.9	64.2	64.3	62.8	66.8	74.2	78.0	79.2	79.4	80.6	78.6	81.5

Table 28.

**Number of Maternal Risk Factors by Health Center District of Residence  
New York City, 1996**

Health Center District	Total Live Births	Percent of Total Live Births with Specified Number of Maternal Risk Factors*			
		None	One	Two	Three
		%	%	%	%
<b>NEW YORK CITY</b>	126,901	39.0	40.8	17.5	2.7
<b>MANHATTAN</b>	19,745	35.4	43.1	18.5	3.0
Central Harlem	2,044	13.4	50.2	31.2	5.2
East Harlem	2,115	24.0	45.4	25.0	5.6
Kips Bay-Yorkville	2,629	61.6	31.6	5.8	1.0
Lower East Side	2,658	47.8	39.9	11.2	1.1
Lower West Side	2,707	49.8	39.5	9.6	1.1
Riverside	2,374	35.7	45.3	16.7	2.4
Washington Heights	5,213	21.6	47.7	26.4	4.4
<b>BRONX</b>	22,244	23.3	48.1	24.8	3.9
Fordham-Riverdale	4,382	27.3	48.3	21.5	3.0
Morrisania	3,445	16.5	50.6	29.1	3.8
Mott Haven	2,479	15.6	49.5	30.1	4.8
Pelham Bay	2,906	29.4	46.0	20.5	4.1
Tremont	4,756	16.1	50.1	28.8	5.0
Westchester	4,267	33.0	44.0	20.2	2.8
<b>BROOKLYN</b>	40,507	36.0	42.3	18.7	2.9
Bay Ridge	3,716	59.0	31.9	8.4	0.6
Bedford	4,089	20.8	48.1	26.5	4.6
Brownsville	5,211	21.2	48.0	26.1	4.7
Bushwick	4,028	20.2	49.1	26.8	3.9
Flatbush	8,550	39.5	41.8	16.4	2.3
Fort Greene	2,422	21.0	47.9	26.6	4.4
Gravesend	3,756	44.9	35.9	16.0	3.2
Red Hook-Gowanus	1,545	37.5	44.3	16.1	2.1
Sunset Park	4,031	48.4	39.6	10.8	1.2
Williamsburg-Greenpoint	3,149	48.4	36.5	12.9	2.2
<b>QUEENS</b>	29,177	41.5	40.5	15.7	2.2
Astoria-Long Island City	3,866	38.4	41.5	18.1	1.9
Corona	6,088	31.0	43.7	21.6	3.7
Flushing	4,759	56.8	32.7	9.3	1.2
Jamaica East	4,948	33.7	46.7	17.2	2.4
Jamaica West	5,936	40.5	41.4	15.9	2.2
Maspeth-Forest Hills	3,558	54.9	34.4	9.5	1.2
<b>RICHMOND</b>	5,823	66.6	24.1	8.4	0.9
<b>NON-RESIDENTS</b>	9,320	71.7	23.7	4.3	0.4
<b>RESIDENCE UNKNOWN</b>	85	17.6	43.5	35.3	3.5

\*Maternal risk factors: no prenatal care in first six months of pregnancy, mother not married, teenaged mother.

Table 29.

**Live Births, Infant Deaths and Infant Mortality Rates  
by Birth Weight and Number of Maternal Risk Factors  
New York City, 1996**

NUMBER OF MATERNAL RISK FACTORS	TOTAL <sup>(1)</sup>			LESS THAN 2,500 GRAMS			2,500 GRAMS AND OVER		
	Infant Deaths			Infant Deaths			Infant Deaths		
	Births	Number	Rate <sup>(3)</sup>	Births	Number	Rate <sup>(3)</sup>	Births	Number	Rate <sup>(3)</sup>
None	49,436	198	4.0	3,186	136	42.7	46,238	61	1.3
One	51,824	419	8.1	4,676	298	63.7	47,135	119	2.5
Two	22,253	268	12.0	2,714	204	75.2	19,526	62	3.2
Three	3,388	43	12.7	380	31	81.6	3,005	12	4.0
Unmatched <sup>(2)</sup>	—	64	—	—	—	—	—	—	—
Total	126,901	992	7.8	10,956	669	61.1	115,904	254	2.2

(1) Includes those with unknown birth weight.

(2) Birth occurred outside of New York City or positive identification of matching birth certificate could not be made.

(3) Rate per 1,000 live births.

**Table 30a. Live Births and Infant Deaths by Birth Weight, Race and Age, New York City, 1996**

Birth Weight in Grams	Live Births				Infant Deaths														
					Total					Age Under 28 Days					Age Under 7 Days				
	Total	White	Black	Other	Total	White	Black	Other	Not Stated	Total	White	Black	Other	Not Stated	Total	White	Black	Other	Not Stated
Less than 500	183	57	112	14	164	47	77	7	33	157	47	71	6	33	152	47	67	5	33
500-999	931	375	491	65	318	118	135	13	52	265	99	105	11	50	215	79	86	8	42
1000-1499	1,086	487	516	83	62	27	27	1	7	31	16	9	-	6	22	10	7	-	5
1500-1999	2,145	1,073	885	187	52	25	23	2	2	28	14	10	2	2	20	9	7	2	2
2000-2499	6,611	3,256	2,611	744	73	36	29	4	4	36	21	10	2	3	28	15	8	2	3
Less than 2500	10,956	5,248	4,615	1,093	669	253	291	27	98	517	197	205	21	94	437	160	175	17	85
2500-2999	23,758	12,223	8,354	3,181	90	44	35	6	5	38	19	12	2	5	25	10	9	2	4
3000-3499	49,116	27,924	14,934	6,258	92	50	36	6	-	36	27	7	2	-	24	20	3	1	-
3500-3999	32,761	20,323	9,128	3,310	49	22	25	2	-	22	11	10	1	-	14	7	6	1	-
4000-4499	8,743	5,606	2,356	781	21	15	6	-	-	9	7	2	-	-	6	6	-	-	-
4500-4999	1,381	895	400	86	2	1	1	-	-	-	-	-	-	-	-	-	-	-	-
5000 & over	145	77	56	12	-	-	-	-	-	-	-	-	-	-	-	-	-	-	-
2500 & over	115,904	67,048	35,228	13,628	254	132	103	14	5	105	64	31	5	5	69	43	18	4	4
Not stated	41	23	11	7	5	5	-	-	-	5	5	-	-	-	5	5	-	-	-
Unmatched*	-	-	-	-	64	47	14	1	2	29	24	4	-	1	17	15	2	-	-
Total	126,901	72,319	39,854	14,728	992	437	408	42	105	656	290	240	26	100	528	223	195	21	89

\*Birth occurred outside of New York City or positive identification of matching birth certificate could not be made.

**Table 30b. Infant Mortality Rates by Birth Weight, Race and Age, New York City, 1996**

Birth Weight in Grams	Total				Age Under 28 Days				Age Under 7 Days			
	Total	White	Black	Other	Total	White	Black	Other	Total	White	Black	Other
Less than 500	896.2 *	**	687.5	**	857.9	**	633.9	**	830.6	**	598.2	**
500-999	341.6	314.7	274.9	**	284.6	264.0	213.8	**	230.9	210.7	175.2	**
1000-1499	57.1	55.4	52.3	**	28.5	32.9	17.4	**	20.3	20.5	13.6	**
1500-1999	24.2	23.3	26.0	21.4	13.1	13.0	11.3	21.4	9.3	8.4	7.9	21.4
2000-2499	11.0	11.1	11.1	10.8	5.4	6.4	3.8	6.7	4.2	4.6	3.1	6.7
Less than 2500	61.1	48.2	63.1	114.4	47.2	37.5	44.4	105.2	39.9	30.5	37.9	93.3
2500-2999	3.8	3.6	4.2	3.5	1.6	1.6	1.4	2.2	1.1	0.8	1.1	1.9
3000-3499	1.9	1.8	2.4	1.0	0.7	1.0	0.5	0.3	0.5	0.7	0.2	0.2
3500-3999	1.5	1.1	2.7	0.6	0.7	0.5	1.1	0.3	0.4	0.3	0.7	0.3
4000-4499	2.4	2.7	2.5	-	1.0	1.2	0.8	-	0.7	1.1	-	-
4500-4999	1.4	1.1	2.5	**	-	-	-	**	-	-	-	**
5000 & over	-	**	**	**	-	**	**	**	-	**	**	**
2500 & over	2.2	2.0	2.9	1.4	0.9	1.0	0.9	0.7	0.6	0.6	0.5	0.6
Total	7.8	6.0	10.2	10.0	5.2	4.0	6.0	8.6	4.2	3.1	4.9	7.5

\* Rate per 1,000 live births. Births and deaths included here were reported in 1996 and do not represent a true birth cohort.

\*\*Rate not computed where base is less than 100.

**Table 31. Infant Deaths by Sex, Age and Race, and by Cause, New York City, 1996**

	Total	MALE			FEMALE		
		Under 7 Days	7 to 27 Days	28 Days & Over	Under 7 Days	7 to 27 Days	28 Days & Over
Total	992	284	65	192	244	63	144
Race of Infant							
White	437	121	32	77	102	35	70
Black	408	101	22	99	94	23	69
Other and not stated	147	62	11	16	48	5	5
Cause of Death (ICD-9 Codes)							
Certain Gastrointestinal Diseases (008-009, 535, 555-558)	2	-	-	1	-	-	1
Acquired Immunodeficiency Syndrome (042)	13	-	-	7	-	-	6
Pneumonia and Influenza (480-487)	16	-	1	9	-	1	5
Congenital Anomalies (740-759)	218	50	18	45	38	22	45
Short Gestation and Low Birth Weight (765)	112	47	-	2	58	2	3
Birth Trauma (767)	2	1	-	-	1	-	-
Intrauterine Hypoxia and Birth Asphyxia (768)	15	3	2	1	3	2	4
Respiratory Distress Syndrome (769)	83	36	10	4	27	4	2
Respiratory Conditions of Newborn (770)	98	39	6	12	25	4	12
Neonatal Hemorrhage (772)	12	6	-	1	1	4	-
Other Conditions Originating in the Perinatal Period (Rest of 760-779)	243	94	22	20	79	17	11
Sudden Infant Death Syndrome (798.0)	64	1	1	43	-	-	19
Injuries (E800-E999)	34	3	1	10	5	1	14
All other causes	80	4	4	37	7	6	22

Table 32.

**Live Births, Infant and Maternal Mortality by Mother's Ethnic Group  
New York City, 1981-1996**

Mother's Ethnic Group (1)	1981	1982	1983	1984	1985	1986	1987	1988	1989	1990	1991	1992	1993	1994	1995 (5)	1996
<b>Live Births, Total</b> .....	108,547	111,487	112,353	113,332	118,542	122,108	127,386	132,226	137,673	139,630	138,148	136,002	133,583	133,662	131,009	126,901
Puerto Rican .....	18,104	18,289	18,014	17,887	17,961	18,138	18,625	18,822	19,248	19,327	18,851	17,856	16,568	15,182	13,895	12,925
Other Hispanic .....	12,392	13,704	14,463	15,228	15,758	16,689	19,372	20,145	23,013	24,912	25,564	25,556	26,571	28,298	29,717	28,114
Asian .....	8,429	8,749	8,947	9,127	9,553	9,894	10,926	11,597	12,051	12,394	12,602	12,688	10,742	11,268	11,647	12,782
Other White .....	35,516	35,653	35,788	35,405	36,825	37,465	37,558	38,992	39,362	38,906	37,464	37,102	38,403	38,203	36,711	37,215
Other Black .....	33,429	34,644	34,749	35,212	37,616	39,064	40,020	41,356	43,069	42,844	41,486	40,662	39,768	39,195	37,217	34,798
Other & Unknown .....	677	448	392	473	829	858	885	1,314	930	1,247	2,181	2,138	1,531	1,516	1,822	1,067
<b>Infant Deaths (Under 1 Year) (2) Total</b> .....	1,678	1,706	1,603	1,540	1,591	1,566	1,673	1,770	1,827	1,620	1,575	1,390	1,366	1,207	1,155	992
Puerto Rican .....	265	296	244	263	226	240	240	241	257	238	211	194	178	120	146	112
Other Hispanic .....	133	154	141	133	139	156	182	186	219	195	187	170	196	174	197	164
Asian .....	80	74	75	76	76	63	65	79	93	67	76	73	60	54	54	58
Other White .....	439	409	388	363	368	323	350	353	321	300	278	194	200	176	168	156
Other Black .....	747	762	742	680	758	751	802	891	911	797	777	653	613	576	503	435
Other & Unknown .....	14	11	13	25	24	33	34	20	26	23	46	106	119	107	87	67
<b>Infant Mortality Rate (3) Total</b> .....	15.5	15.3	14.3	13.6	13.4	12.8	13.1	13.4	13.3	11.6	11.4	10.2	10.2	9.0	8.8	7.8
Puerto Rican .....	14.6	16.2	13.5	14.7	12.6	13.2	12.9	12.8	13.4	12.3	11.2	10.9	10.7	7.9	10.5	8.7
Other Hispanic .....	10.7	11.2	9.7	8.7	8.8	9.3	9.4	9.2	9.5	7.8	7.3	6.7	7.4	6.1	6.6	5.8
Asian .....	9.5	8.5	8.4	8.3	8.0	6.4	5.9	6.8	7.7	5.4	6.0	5.8	5.6	4.8	4.6	4.5
Other White .....	12.4	11.5	10.8	10.3	10.0	8.6	9.3	9.1	8.2	7.9	7.4	5.2	5.2	4.6	4.6	4.2
Other Black .....	22.3	22.0	21.4	19.3	20.2	19.2	20.0	21.5	21.2	18.6	18.7	16.1	15.4	14.7	13.5	12.5
<b>Neonatal Deaths (Under 28 Days) Total</b> .....	1,144	1,173	1,070	1,014	1,082	1,078	1,139	1,232	1,253	1,091	1,089	941	917	804	811	656
Puerto Rican .....	169	198	166	165	141	157	157	159	172	155	138	138	108	67	113	72
Other Hispanic .....	88	110	102	97	100	117	134	133	153	136	136	120	136	122	143	113
Asian .....	58	52	47	53	45	47	42	59	60	44	45	50	38	40	42	39
Other White .....	318	301	274	267	268	254	251	264	238	222	201	139	152	133	132	116
Other Black .....	503	506	471	414	513	481	535	602	610	518	533	429	409	376	332	279
<b>Neonatal Mortality Rate (3) Total</b> .....	10.5	10.5	9.5	8.9	9.1	8.8	8.9	9.3	9.1	7.8	7.9	6.9	6.9	6.0	6.2	5.2
Puerto Rican .....	9.3	10.8	9.2	9.2	7.9	8.7	8.4	8.4	8.9	8.0	7.3	7.7	6.5	4.4	8.1	5.6
Other Hispanic .....	7.1	8.0	7.1	6.4	6.3	7.0	6.9	6.6	6.6	5.5	5.3	4.7	5.1	4.3	4.8	4.0
Asian .....	6.9	5.9	5.3	5.8	4.7	4.8	3.8	5.1	5.0	3.6	3.6	3.9	3.5	3.5	3.6	3.1
Other White .....	9.0	8.4	7.7	7.5	7.3	6.8	6.7	6.8	6.0	5.7	5.4	3.7	3.9	3.5	3.6	3.1
Other Black .....	15.0	14.6	13.6	11.8	13.6	12.3	13.4	14.6	14.2	12.1	12.8	10.6	10.3	9.6	8.9	8.0
<b>Maternal Deaths, Total</b> .....	33	37	44	21	30	29	28	26	29	35	24	30	20	29	26	22
Puerto Rican .....	3	5	3	1	1	4	2	2	4	1	4	2	2	4	3	1
Other Hispanic .....	4	6	8	3	6	0	4	6	2	4	2	3	2	5	7	4
Asian .....	1	1	1	0	1	2	6	-	-	1	-	1	-	2	1	1
Other White .....	6	8	7	4	3	6	3	2	2	2	2	6	-	6	-	4
Other Black .....	19	16	24	13	15	14	8	15	20	25	15	16	14	12	14	11
<b>Maternal Mortality Rate (4) Total</b> .....	3.0	3.3	3.9	1.9	2.5	2.4	2.2	2.0	2.1	2.5	1.7	2.2	1.5	2.2	2.0	1.7
Puerto Rican .....	1.7	2.7	1.7	0.6	0.6	2.2	1.1	1.1	2.1	0.5	2.1	1.1	1.2	2.6	2.2	0.8
Other Hispanic .....	3.2	4.4	5.5	2.0	3.8	-	2.1	3.0	0.9	1.6	0.8	1.2	0.8	1.8	2.4	1.4
Asian .....	1.2	1.1	1.1	-	1.0	2.0	5.5	0.9	0.8	0.8	-	0.8	-	1.8	0.9	0.8
Other White .....	1.7	2.2	2.0	1.1	0.8	1.6	0.8	0.5	0.5	0.5	0.5	1.6	-	1.6	-	1.1
Other Black .....	5.7	4.6	6.9	3.7	4.0	3.6	2.0	3.6	4.6	5.8	3.6	3.9	3.5	3.1	3.8	3.2

(1) Puerto Rican and other Hispanic ethnicities are based on ancestry, regardless of race. Prior to 1993, Asian ethnicity is based on ancestry; beginning in 1993, Asian ethnicity is based on race.

Those of other ancestries are classified as Other White, Other Black, Other and Unknown based on race. See Technical Notes.

(2) In the absence of a matching birth certificate for an infant death, the information on the death certificate is used to assign a maternal ethnic group.

(3) Rate per 1,000 live births.

(4) Rate per 10,000 live births.

(5) The classification of 1995 events by ethnic group of mother is corrected from the 1995 Vital Statistics Summary.

Table 33.

## Cases of Reportable Diseases, New York City, 1940-1996

Year	Pulmonary Tuberculosis	Measles	Scarlet Fever	Chicken Pox	Whooping Cough	Meningococcal Meningitis	Poliomyelitis	Syphilis		Gonorrhea	Encephalitis	Hepatitis	Rubella
								Total	Primary & Secondary				
1940	8,212	10,496	13,569	13,046	5,775	48	67	30,178	3,113	14,639	28		988
1941-1945	7,870	24,890	8,111	9,277	5,706	705	658	25,773	4,124	13,955	42		7,360
1946-1950	6,888	17,348	3,579	9,912	2,574	145	991	24,144	3,688	21,522	55	140	2,442
1951	6,331	9,644	2,144	11,849	1,606	110	555	22,458	801	14,114	200	202	4,122
1952	6,021	34,614	3,548	8,912	1,379	144	821	25,078	784	12,105	280	285	3,267
1953	6,110	5,117	1,595	12,942	2,733	183	677	25,224	658	12,505	311	515	2,315
1954	5,439	41,037	2,143	8,775	1,777	129	844	19,412	617	12,379	270	809	1,186
1955	5,064	9,712	1,834	10,486	1,136	108	806	18,056	566	11,239	220	1,154	8,888
1956	5,089	21,616	2,357	11,433	1,113	75	149	17,052	605	10,482	309	824	3,100
1957	5,162	10,226	1,657	7,287	1,326	75	57	15,485	635	11,479	204	597	1,998
1958	4,513	28,272	1,944	8,403	655	36	100	13,082	911	13,341	165	637	5,911
1959	4,196	5,215	2,043	7,731	1,322	92	170	13,131	1,454	14,370	212	841	4,694
1960	3,923	25,523	2,622	8,042	416	89	92	16,872	2,606	16,677	97	1,106	3,760
1961	3,635	4,796	2,820	6,190	249	69	2	20,017	3,374	18,285	216	1,839	1,543
1962	3,702	29,631	1,259	7,913	307	59	7	20,058	3,329	18,901	175	1,359	1,560
1963	4,057	7,406	1,287	6,683	212	50	1	19,312	3,481	22,912	147	1,325	3,294
1964	3,381	15,435	1,052	6,183	304	42	2	18,875	3,215	25,896	158	1,287	21,292
1965	3,389	4,127	792	7,423	194	68	0	16,999	2,897	29,032	162	1,248	1,031
1966	2,952	8,381	799	4,172	206	56	0	13,724	2,364	29,679	146	1,552	1,036
1967	2,893	529	731	5,897	179	65	1	13,918	1,987	27,373	61	2,558	1,030
1968	2,658	2,445	732	4,267	122	90	1	13,204	2,172	32,637	61	3,542	3,074
1969	2,397	5,033	891	3,640	149	88	0	11,439	2,630	36,729	57	3,982	1,185
1970	2,073	1,154	513	4,978	163	90	0	10,362	3,780	36,783	35	4,492	685
1971	2,048	3,819	614	3,815	55	60	0	11,642	3,854	38,472	19	4,160	626
1972	1,874	447	445	5,603	79	44	1	10,390	4,106	48,414	11	2,907	271
1973	1,740	965	708	4,496	77	37	0	7,334	3,256	45,467	26	1,478	502
1974	1,582	651	402	3,877	75	26	0	7,593	3,184	42,071	17	1,078	173
1975	2,187	170	463	3,982	40	32	0	7,236	2,864	39,981	14	1,366	193
1976	1,775	497	609	3,289	43	51	1	6,832	2,494	40,589	20	1,897	163
1977	1,189	804	583	3,936	47	64	0	4,749	1,881	39,302	20	1,604	336
1978	1,034	405	271	2,773	54	88	0	5,567	2,060	40,208	30	1,260	152
1979	1,240	859	312	3,052	44	91	1	6,680	2,552	40,034	17	1,080	290
1980	1,186	1,210	319	4,789	30	110	0	5,906	2,387	43,699	15	1,079	105
1981	1,340	108	464	3,863	25	91	0	6,878	2,568	45,859	20	1,722	55
1982	1,246	49	583	3,382	53	104	2	7,296	2,602	46,960	21	1,980	36
1983	1,306	72	454	4,383	61	89	1	6,822	2,473	46,117	14	1,992	87
1984	1,322	113	427	5,811	20	75	0	6,796	2,285	48,032	9	2,268	111
1985	1,482	181	409	2,366	26	70	1	6,947	2,157	58,532	18	N.A.	184
1986	1,766	944	N.A.	1,583	10	81	0	6,465	2,111	69,998	21	884	2
1987	1,815	449	206	5,091	13	57	0	10,472	4,452	84,022	8	1,514	1
1988	1,814	56	81	3,406	12	66	0	11,966	5,042	52,404	6	1,945	5
1989	2,118	135	108	4,307	19	50	0	13,748	4,362	40,533	9	2,170	16
1990	2,937	1,108	175	4,732	21	79	0	16,195	4,265	35,236	12	1,539	4
1991	3,111	1,909	325	4,967	22	30	0	14,895	3,133	28,945	5	1,725	2
1992	3,283	68	258	6,578	24	28	0	13,439	2,246	21,709	9	1,322	0
1993	2,753	19	267	5,359	116	40	0	10,476	1,129	18,477	5	1,574	22
1994	2,483	15	335	5,977 *	223	40	0	7,640	626	19,246	11	1,486	1
1995	1,939	5	211		36	54	0	7,577	362	16,361	8	1,531	6
1996	1,600	11	164		64	56	0	5,670	138	12,998	4	1,118	5

Note: Figures for single years from 1941 to 1950 appear in the annual summaries for 1995 and earlier.

For discussion of specific diseases and factors which affect reporting, see City Health Information, Vol. 15 No. 4, December 1996, pp. 16-21.

\* Not reportable as of December 11, 1994.

Table 34.

## Incidence of AIDS By Sex, Major Risk Group, and Year of Diagnosis, New York City, 1980-1996

Sex/Risk Group	1980-1984	1985	1986	1987	1988	1989	1990	1991	1992	1993	1994	1995	1996
Male													
Intravenous Drug Use (IDU)	801	730	1,111	1,470	2,110	2,222	2,695	3,134	3,850	4,495	3,823	2,995	1,398
Sex with Men	2,065	1,518	2,175	2,406	2,603	2,637	2,623	2,848	3,173	3,475	3,105	2,247	934
IDU and Sex with Men	232	144	181	232	235	251	234	296	288	266	175	137	47
Transfusion	9	16	20	27	25	14	1	8	1	5	1	1	1
Heterosexual Transmission	7	0	6	7	19	25	29	60	103	203	272	296	155
Other	130	77	110	143	234	296	318	440	537	687	1,007	1,346	836
Total	3,244	2,485	3,603	4,285	5,226	5,445	5,900	6,786	7,952	9,131	8,383	7,022	3,371
Female													
Intravenous Drug Use	229	177	302	464	642	744	942	1,229	1,474	1,701	1,462	1,204	536
Heterosexual Transmission	54	71	109	216	254	318	414	515	681	1,011	955	845	400
Transfusion	10	6	16	22	14	9	6	5	7	3	3	0	1
Other	48	28	36	52	80	105	119	170	227	267	364	510	355
Total	341	282	463	754	990	1,176	1,481	1,919	2,389	2,982	2,784	2,559	1,292

Note: Persons under 13 years of age are not included. Figures include reports through 1996; data for recent years are incomplete due to reporting lag.

## TECHNICAL NOTES, 1996

**VITAL EVENTS** - Vital event data are based on occurrences in New York City to both residents and non-residents. Counts of births, deaths and induced and spontaneous terminations of pregnancy are based on certificates filed with the Office of Vital Records, New York City Department of Health. (The number of induced and spontaneous terminations of pregnancy reported each year depends to some extent on the level of active surveillance; some of the increase in reported spontaneous terminations between 1995 and 1996 of almost 4,000 is due to increased surveillance. For these vital events, some late-reported events occurring in the previous year may be included.) The number of marriages shown in Table 1 is the number of marriage licenses issued by the City Clerk. Tables 14, 15 and 16 use other data sources; see Life Expectancy below. ! For public health purposes, the medical and demographic information on the certificates is coded in general agreement with standards developed by the National Center for Health Statistics (NCHS). In some instances, such as Ancestry of decedent or mother, New York City data are more detailed. ! Because New York City law prohibits recording mother's marital status on the birth certificate, it is inferred from other items.

**POPULATION** - Population data are census figures provided by the New York City Department of City Planning and the New York State Department of Health. In Table 1, the population figures for census years (1960, 1970, 1980 and 1990) are census counts; for intercensal years straight-line interpolations are used. Rates in this table are based on the population shown, which may be out-dated. ! The corrected data in Table 2a are based on the Bureau of the Census's MARS File (Modified for Age, Race and Sex). The primary change is the allocation to a race category of over 900,000 New York City residents of Hispanic ancestry who did not report a race in the census; the number of New York City residents in the race category other and unknown declined from 1,392,964 to 556,918, while the number of whites increased by almost 650,000 and the number of blacks by almost 190,000. There were also some minor corrections in the age and sex distributions.

**LIFE EXPECTANCY, AGE SPECIFIC AND ADJUSTED DEATH RATES**- Life expectancy tables summarize the effect of mortality rates prevailing at a specific time on persons being born or living at that time. Tables may be computed for population subgroups, most often males and females and race groups. The components required are counts and mortality figures for the desired subgroups. Life expectancy tables are presented for census years, which are when the population data are available. The mortality experience for the census year and for the year before and the year after is used to smooth statistical variation. ! The same two sets of data, population and mortality, are used to prepare average yearly age-sex-specific death rates for the three years (Table 15). Finally, the mortality data are separated into cause groups, and used to calculate average yearly age-sex-race adjusted death rates (Table 16). Adjustment allows comparisons between rates to be made over time or between geographic areas by eliminating the effects of differences in the composition of the populations. ! A change in the data used for the 1980 and 1990 calculations is noted in Tables 15 and 16 by a line separating these rates from those for earlier years. The calculations for 1980 and 1990 used information on all deaths occurring to New York City residents regardless of place of

occurrence (obtained from the New York State Department of Health), whereas previous computations used all deaths occurring in New York City regardless of residence of the decedent. The new data were also used to recompute 1980 life expectancy tables to facilitate comparisons with 1990 figures. ! Life expectancy tables for Hispanics were not calculated because of underreporting of Hispanic ancestry in death certificates; technical changes in the death certificate were made in 1993 to correct this problem.

**RACE, ANCESTRY AND ETHNICITY** - Race and Ancestry are separate items on the certificates. Responses are coded in general conformance to rules of NCHS. ! In 1992, five additional codes for Asian and Pacific Islander races were added, following their introduction by NCHS: Asian Indian, Guamanian, Korean, Samoan and Vietnamese. Codes previously used include Chinese, Filipino, Hawaiian, Japanese and other. ! In certain instances, the item Birthplace is used to remove ambiguity in the Race item. ! Persons whose race is black and whose ancestry is American are classified as being of African-American ancestry. ! A new method of assigning Asian ethnicity was introduced in 1993, using Asian race rather than Asian ancestry as was done in the past. The ordered selection rules first assign Puerto Rican or other Hispanic ethnicities based on ancestry, regardless of race. Then, those of other ancestries are classified by race as other White, other black, other or unknown. This change is made to take advantage of expanded Asian race categories introduced in 1992.

**CAUSE OF DEATH** - Cause of death information presented is the underlying cause of death on each certificate, selected using rules issued by NCHS and codes of the International Classification of Diseases, Ninth Revision, implemented in 1979. Earlier revisions and the year their codes were implemented are the Fifth, 1939; Sixth, 1949; Seventh, 1959; and Eighth, 1969. Long term trends in causes of death should be interpreted with caution because of possible change in causes and groupings with each revision. Changes are occasionally made to terms used to describe causes of death, and rarely changes are made in the defining ICD codes. ! Beginning in 1996, Alzheimer's disease and deaths due to firearms are shown separately, following NCHS practice.

**External Causes of Death** - External causes of death include accident, suicide, homicide, legal intervention, injury undetermined whether accidentally or purposely inflicted and injury resulting from operations of war. Some homicides are considered justifiable and are reported as such by the New York City Police Department under the Uniform Crime Reporting System of the Federal Bureau of Investigation. Deaths due to legal intervention have been included in the homicide figures reported in the Vital Statistics Summary, and have been identified in the detailed homicide table. Deaths due to injury resulting from operations of war have also been included in the homicide total; these are infrequent, only one having been reported from 1984 through 1996, and are not specifically identified. ! All death certificates for external causes are reported by the Office of Chief Medical Examiner. Deaths for which a cause has not been determined by the time the statistical file is closed are now shown separately in Table 3; some of these pending deaths will be determined to be due to natural causes. This number has declined since 1989. ! The introduction of the category injury

undetermined in 1969 affected the number of deaths classified as accidents or suicides; any discussion of trends in these causes should take this change into account. The number of deaths classified as injury undetermined has declined since 1989, but they should be considered in analysis of deaths due to external causes. ! The classification of accident types in Tables 3 and 8 is based on categories developed by the National Safety Council, which emphasize the site of the accident. However, deaths due to firearms and to accidental drug poisoning are shown separately, regardless of site.

**Fatal Occupational Injuries** - The Census of Fatal Occupational Injuries is carried out according to a protocol developed by the Bureau of Labor Statistics (BLS) of the U.S. Department of Labor. Autopsy and other reports for deaths due to external causes (see above) are reviewed if the injury occurred at work. Definitions and terminology are those of BLS, which may differ from those generally used in vital statistics.

**Deaths Due to Drug Abuse** - Revised procedures at the Office of Chief Medical Examiner in 1989 led to a substantial portion of deaths related to drug use being classified as accidental drug poisonings. In prior years, virtually all such deaths were classified as due to drug dependence. In order to maintain continuity with previously published vital statistics, three new categories have been added to various tables. Accidental drug poisoning is shown in Tables 3, 8 and 17. Accidents except drug poisoning appears in Tables 4 and 5. Drug dependence and accidental drug poisoning is shown in Tables 3, 4 and 5. ! Deaths due to accidental drug poisoning are assigned to one of the following four codes of the ICD-9, depending on the agent: E858.0, opiates and related narcotics; E854.1, psychodysleptics; E855.2, local anesthetics; E858.8, other drugs and combinations. Deaths due to drug dependence are assigned to code 304. ! Since 1989, the number of deaths assigned to accidental drug poisoning has declined; the category drug dependence and accidental drug poisoning is the most useful for analysis of trends.

**AIDS Mortality** - Mortality data for AIDS represent the number of deaths with underlying cause assigned to code 279.1 of the ICD-9 in 1986 and earlier, and to newly created code 042 in 1987 and thereafter. For other deaths due to Human Immunodeficiency Virus (HIV), codes 043 and 044 were also created in 1987. Since New York City has an active AIDS surveillance system, it is possible to compare death certificate data to the Surveillance Registry. Death certificate information for adult AIDS deaths for 1990 was compared to the New York AIDS Surveillance Registry and 92% were identified as confirmed AIDS cases. Among AIDS cases on the registry who died in 1990, 84% had AIDS as the underlying cause of death. Other underlying causes recorded for these decedents were HIV infection and pneumocystis pneumonia. Death certificates for pediatric (age under 13 years) AIDS cases agreed with the AIDS Registry in 80% of cases. Among pediatric AIDS cases on the registry who died in 1990, 75% had AIDS as the underlying cause of death.

**Infant Mortality**- The infant mortality rate consists of the number of infant deaths in a specified time and place divided by the number of births in the same time and place: some infants in the numerator were born in the preceding year, and some in the denominator will die in the following year. ! In this summary, all characteristics

## TECHNICAL NOTES, 1996

of infant deaths are drawn from the death certificate except in Table 32, which uses the ethnic group of the mother. In Tables 29 and 30, maternal risk factors and birth weight are based on the birth certificates.

**Maternal Deaths**- Maternal deaths are those with underlying causes assigned to codes 630-679, complications of pregnancy, childbirth and the puerperium (the six-week period following childbirth). These codes are assigned only if death occurs within 42 days of delivery.

**BOROUGH OF RESIDENCE** - Borough of residence and

other geographic classifications are based on the usual residence reported in the certificate. As of 1990 deaths of nursing home residents are assigned to the area where the nursing home is located, as residents of nursing homes are included in census figures. Prior to 1990, these deaths were reported in a separate category, Residents of Institutions.

**PLACE OF DEATH**-Hospital reported as the Place of Death includes residential units, hospices and other special facilities within the hospital. Nursing Home includes only sites licensed as Extended

Care Facilities by the State of New York. Home includes, in addition to private houses and apartments, group quarters for special populations, homes for adults and other long-term residential sites.

**PLACE OF BIRTH**- Reporting of home births in Tables 22 and 23 has been corrected to include events where the certificate was filed through a hospital. For 1995, the number of home births was 762, not 249 as previously reported.

## Rates and Ratios Defined

The numerators of the rates in these tables are events occurring in New York City and reported during the year, unless otherwise specified. The denominator is the resident population figure from the 1990 census, including all ages and both sexes, unless otherwise specified.

Live Birth Rate - The number of live births per 1,000 population.

$$\frac{\text{Live Births}}{\text{Population}} \times 1,000$$

Marriage Rate - The number of marriages per 1,000 population.

$$\frac{\text{Marriages}}{\text{Population}} \times 1,000$$

Infant Mortality Rate - The number of infant (under one year of age) deaths per 1,000 live births.

Neonatal Mortality Rate - The number of neonatal (under 28 days) deaths per 1,000 live births.

Post-neonatal Mortality Rate - The number of post-neonatal (28 days to under one year of age) deaths per 1,000 live births.

$$\frac{\text{Infant Deaths}}{\text{Live Births}} \times 1,000$$

Fetal Death Ratio - The number of fetal deaths of 28 weeks gestation and over per 1,000 live births.

$$\frac{\text{Fetal deaths 28 weeks and over}}{\text{Live Births}} \times 1,000$$

Perinatal Mortality Ratio - The number of fetal deaths of 28 weeks gestation and over plus the number of early neonatal (under seven days) deaths per 1,000 fetal deaths of 28 weeks gestation and over plus live births.

$$\frac{(\text{Fetal deaths 28 weeks and over} + \text{Infant deaths under 7 days})}{\text{Fetal deaths 28 weeks and over} + \text{Live Births}} \times 1,000$$

Death Rate, all causes - The number of deaths per 1,000 population.

$$\frac{\text{Deaths all causes}}{\text{Population}} \times 1,000$$

Death Rate, specified causes - The number of deaths due to a specified cause per 100,000 population.

Death Rate, age and sex specific - The number of deaths of persons of specified age and sex per 1,000 population of the specified age and sex.

Death Rate, age, sex and race adjusted - The number of deaths per 100,000 standard population. Age, sex and race specific death rates are applied to a standard population, eliminating the effect of differences in population composition, and allowing comparisons over time or between geographic areas.

Maternal Mortality Rate - The number of deaths due to complications of pregnancy, childbirth and puerperium occurring within 42 days of delivery per 10,000 live births.

---



**Figure 11. New York City,  
boroughs and health center districts**



## HIGHLIGHTS, 1996

**ELECTRONIC BIRTH CERTIFICATE SYSTEM** - By the end of 1996, all hospitals and birthing centers were using the Electronic Birth Certificate (EBC) system to create, print and file birth certificates. The system was introduced by the New York City Department of Health in May 1995. Changes in the New York City Health Code, which governs the reporting of vital events, required that generally all births be recorded using the system by the end of 1996.

The EBC system enables hospitals to create a birth record electronically, print a report of birth for signing and filing with the Department, submit registration and public health information electronically, and generate statistical reports for their own use. The system has edit checks and other features that improve data quality and speed filing times. Errors that may have been introduced by Health Department manual processing are eliminated.

In 1996, 73% (92,599) of the 126,901 births in New York City were reported via EBC. The change may have caused a shift in some birth data. For example, when entering a parent's race or ancestry information, hospital personnel now select from a full array of choices, rather than having a very limited number of examples on the paper certificate.

**DEATHS** - The total number of deaths in New York City dropped more than 5% from 1995 to 1996: a decline of 3,985 from 70,769 to 66,784. Half of the decline, 2,048 was in deaths due to HIV/AIDS, which dropped from 7,046 to 4,998. A similar decline in HIV/AIDS is occurring nationwide. Among other causes of death, of interest is a 15% decline in homicide, from 1,209 to 1,018. Decline in HIV/AIDS and homicide deaths generally affect late adolescents, and young and middle-age adults. Another age group whose mortality experience improved noticeably in 1996 was infants. The infant mortality rate (deaths under one year of age per 1,000 live births) fell to the lowest level in New York City's history, 7.8.

**BIRTHS** - The number of births registered in New York

City in 1996 declined 3% from 131,009 to 126,901, which was consistent with a national decline of 3%.

**MARRIAGE LICENSES** - The number of marriage licenses issued in New York City increased 11% from 1995 to 1996, from 71,507 to 79,361. Anticipated changes in Federal legislation affecting immigration and welfare may have led to this increase.

**REPORTING** - As reported in this and earlier Summaries of Vital Statistics, Homicide as a cause of death includes deaths due to legal intervention as well as deaths due to the operations of war. Homicides reported by the New York City Police Department follow the rules of the Federal Bureau of Investigation's Uniform Crime Reporting System, including the designation of some deaths as justifiable homicides and therefore not included with other homicides.

The Summary of Vital Statistics now shows deaths due to firearms regardless of manner (accident, suicide, homicide) in Table 3, as well as deaths due to Alzheimer's disease. This follows NCHS practice. The rate of deaths reported as due to Alzheimer's disease in New York City, shown in Table 17, is substantially below the national rate.

**NEW TABLE** - Table 7A, Selected Characteristics of Deaths Due to Fatal Occupational Injuries, presents data from the Census of Fatal Occupational Injuries (CFOI). New York City has participated in this federal-state cooperative program, partially funded by the U.S. Department of Labor, since 1991. Among deaths due to external causes, those reported as due to an injury at work are studied to provide uniform national data on deaths in the workplace.

In New York City in 1996, 148 workers died on the job. Half of the deaths were homicides, and most of these involved shooting. The most perilous industry was retail trade, particularly grocery stores and eating and drinking places. Taxicabs, which are part of the transportation industry, are also dangerous for workers, as is the construction industry.



### DEPARTMENT OF HEALTH Office of Vital Statistics and Epidemiology

Rudolph W. Giuliani, Mayor  
Benjamin Mojica, M.D., M.P.H., Acting Commissioner